



OpenCities Planner / CityPlanner

News, Roadmap, Migration

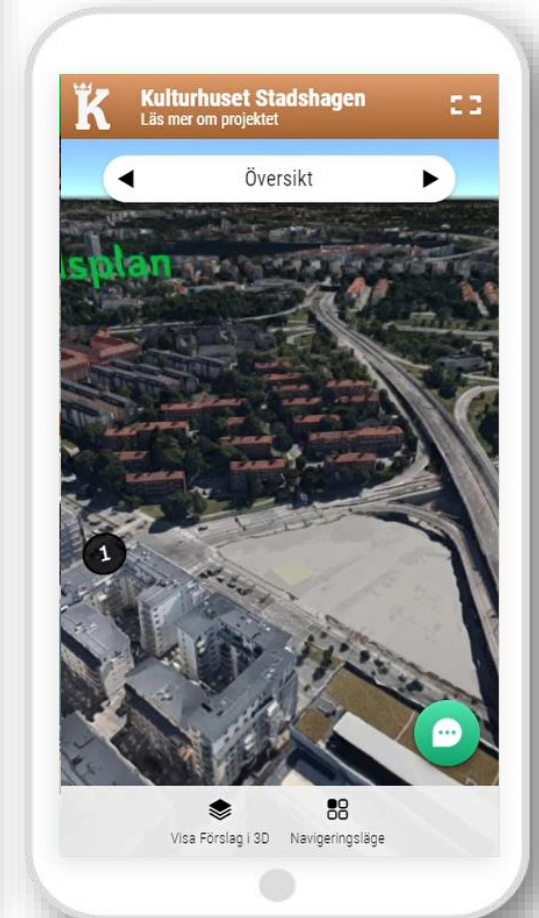
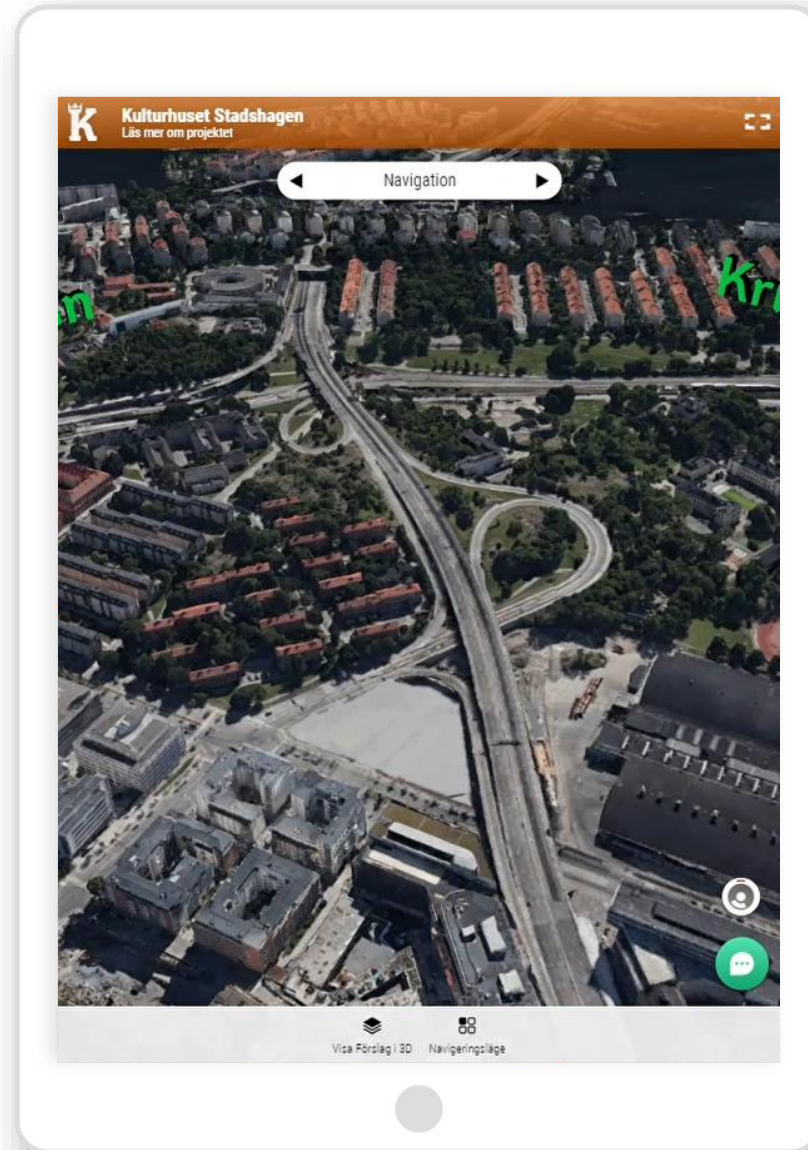
Bentley[®]
Advancing Infrastructure

Agenda

- News 2019-20
- IoT demos
- Roadmap 2020
- Bentley Solutions integration
- Migration

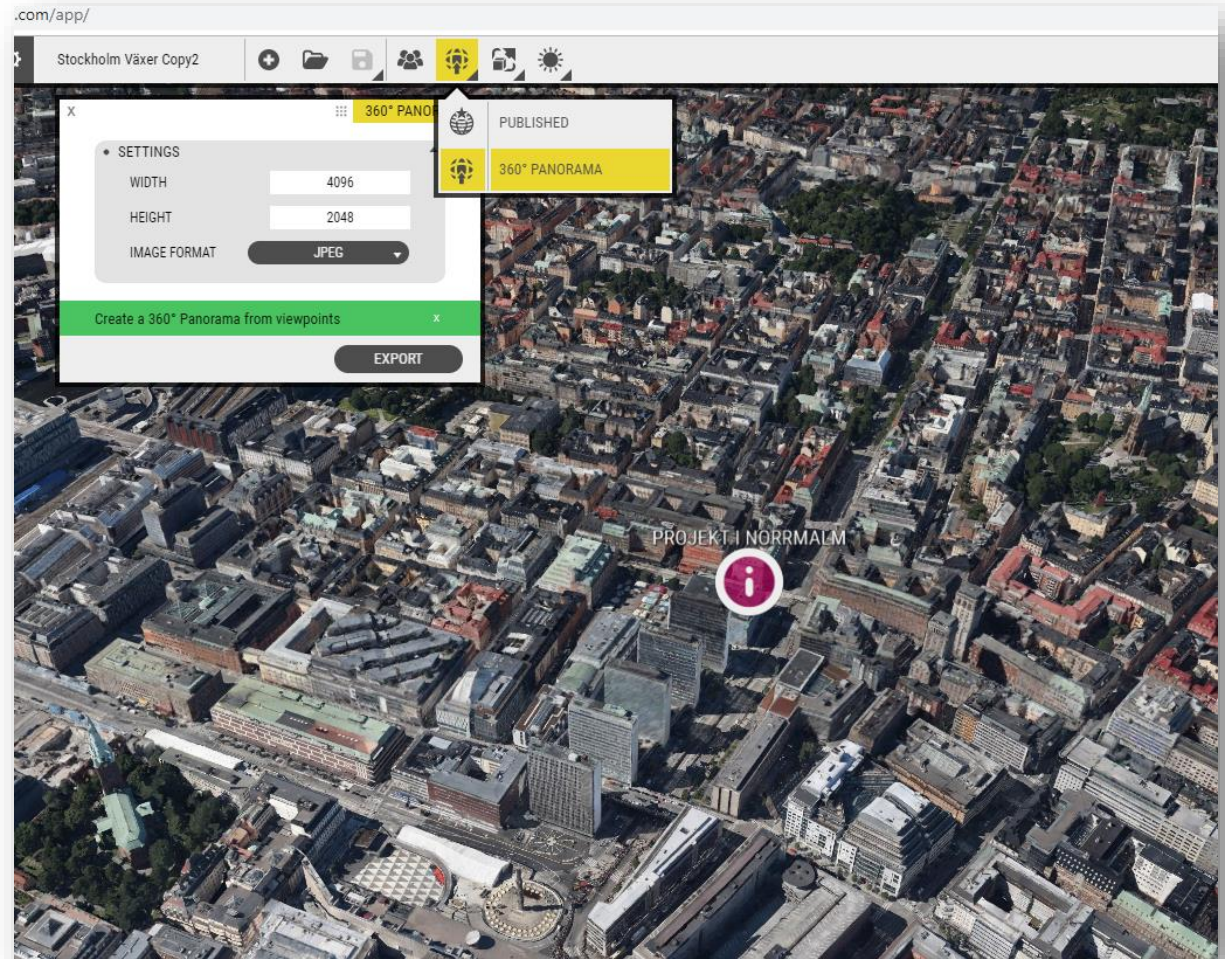
Mobile Interface

- Responsive UI for mobile & tablets
- Automatically available
- Optional 360 tour exports



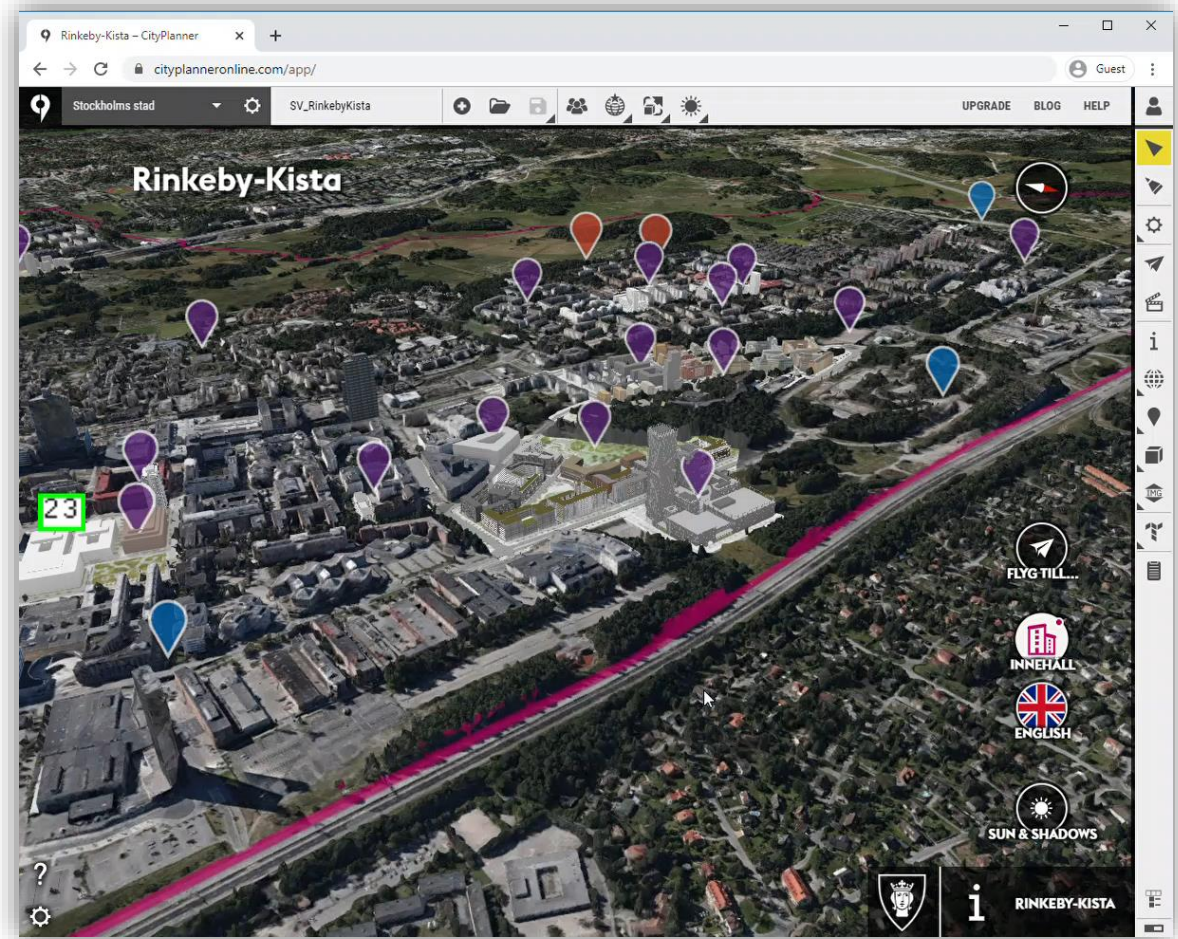
360 tour exports

- Exports from every viewpoint in the project
 - And every possible layer combination
- Groups & Layers, POI's, Project Info, Dialogue survey works
- Draw tools in Dialogue does not work in 360 mode, but user can switch to full 3D and draw
- Remember to keep the current Chrome tab active when exporting or exporting will pause.

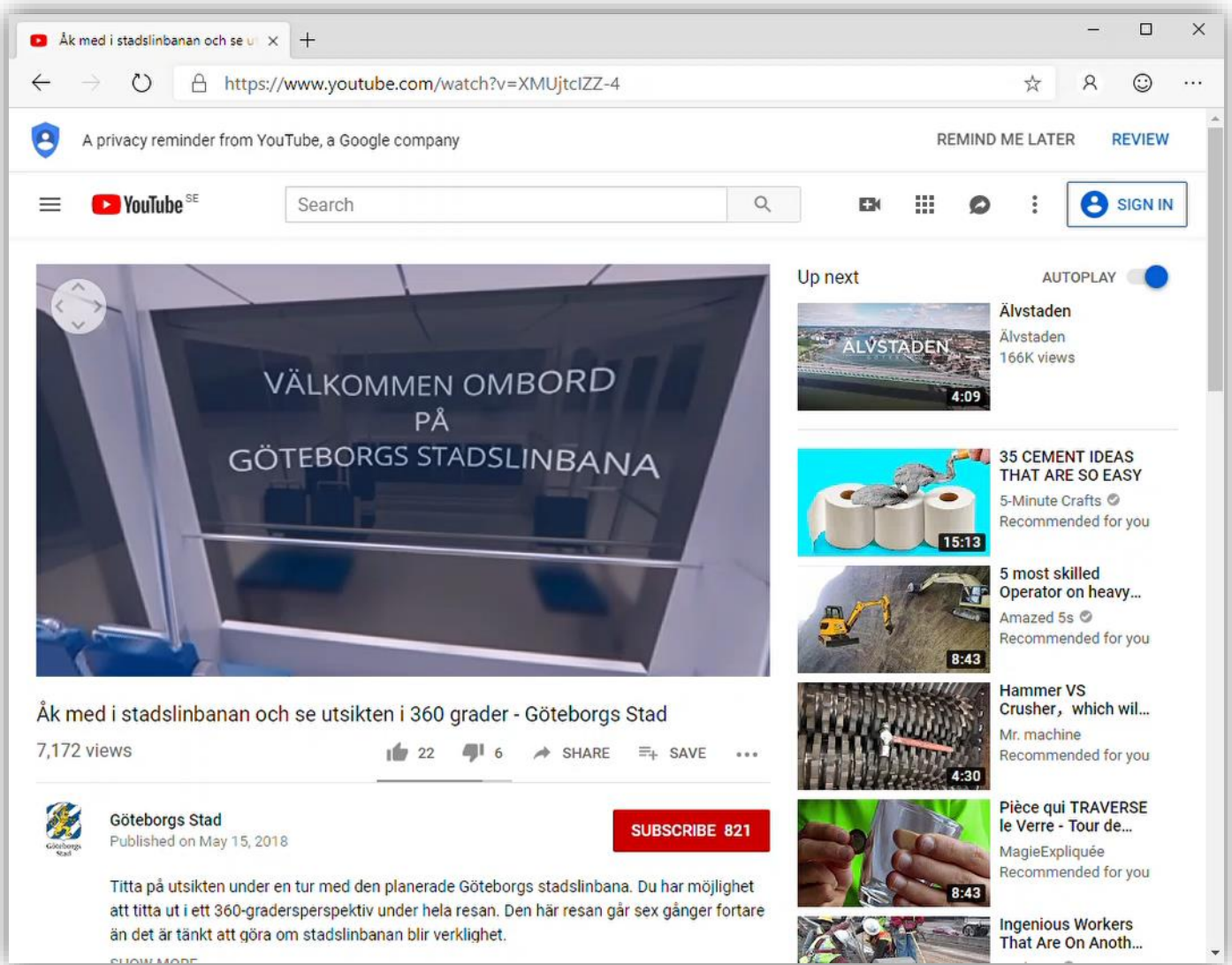


Camera animation & video export tool

- Draw a camera path, set view look-at position, duration
- Export settings
 - Duration
 - Resolution
 - Standard or Panorama video
- Exports as .webm format
- Remember to keep the Chrome tab active when exporting or it will pause!



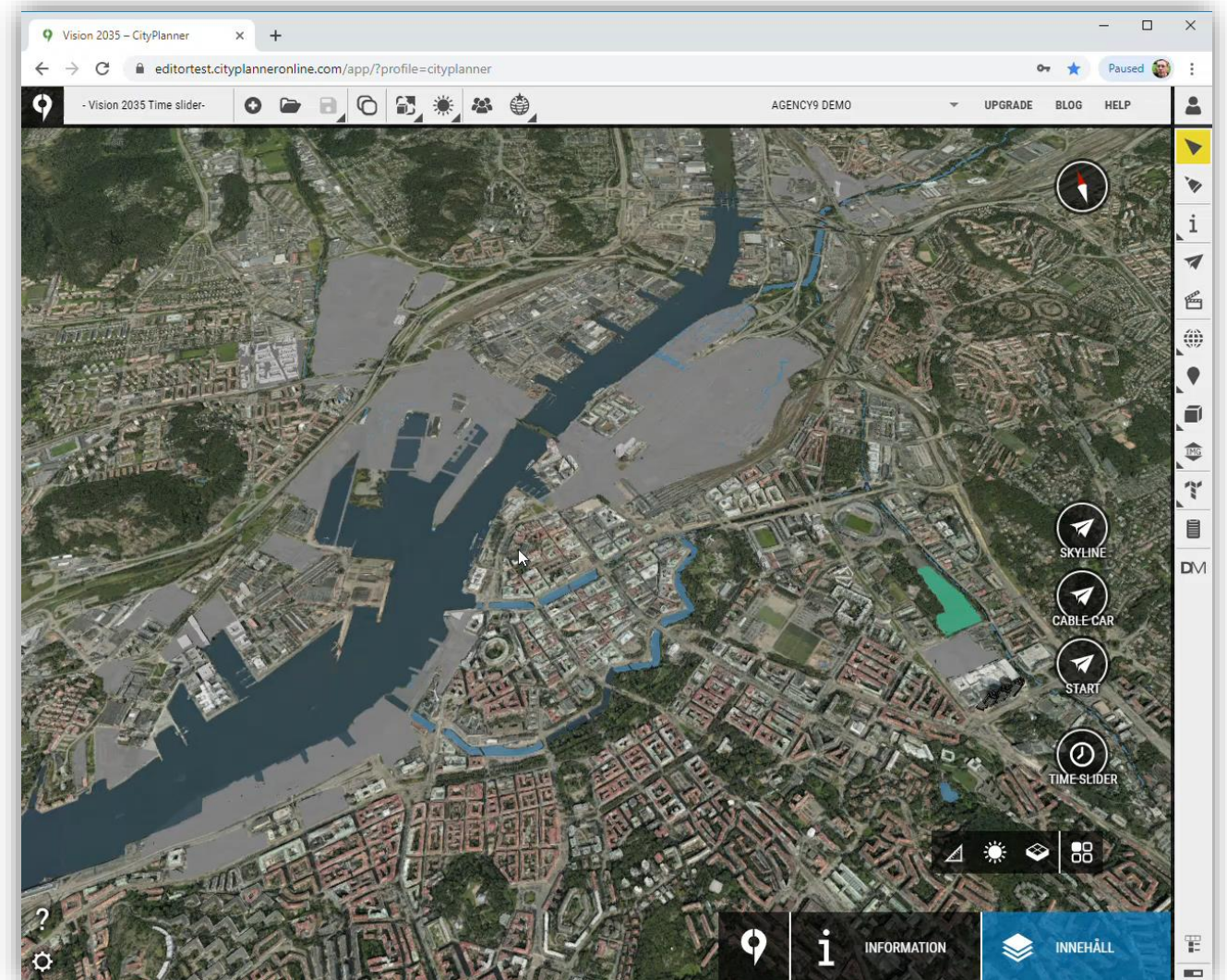
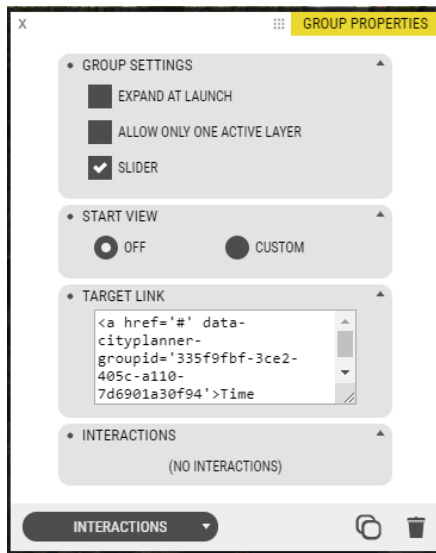
Camera animation & video export tool



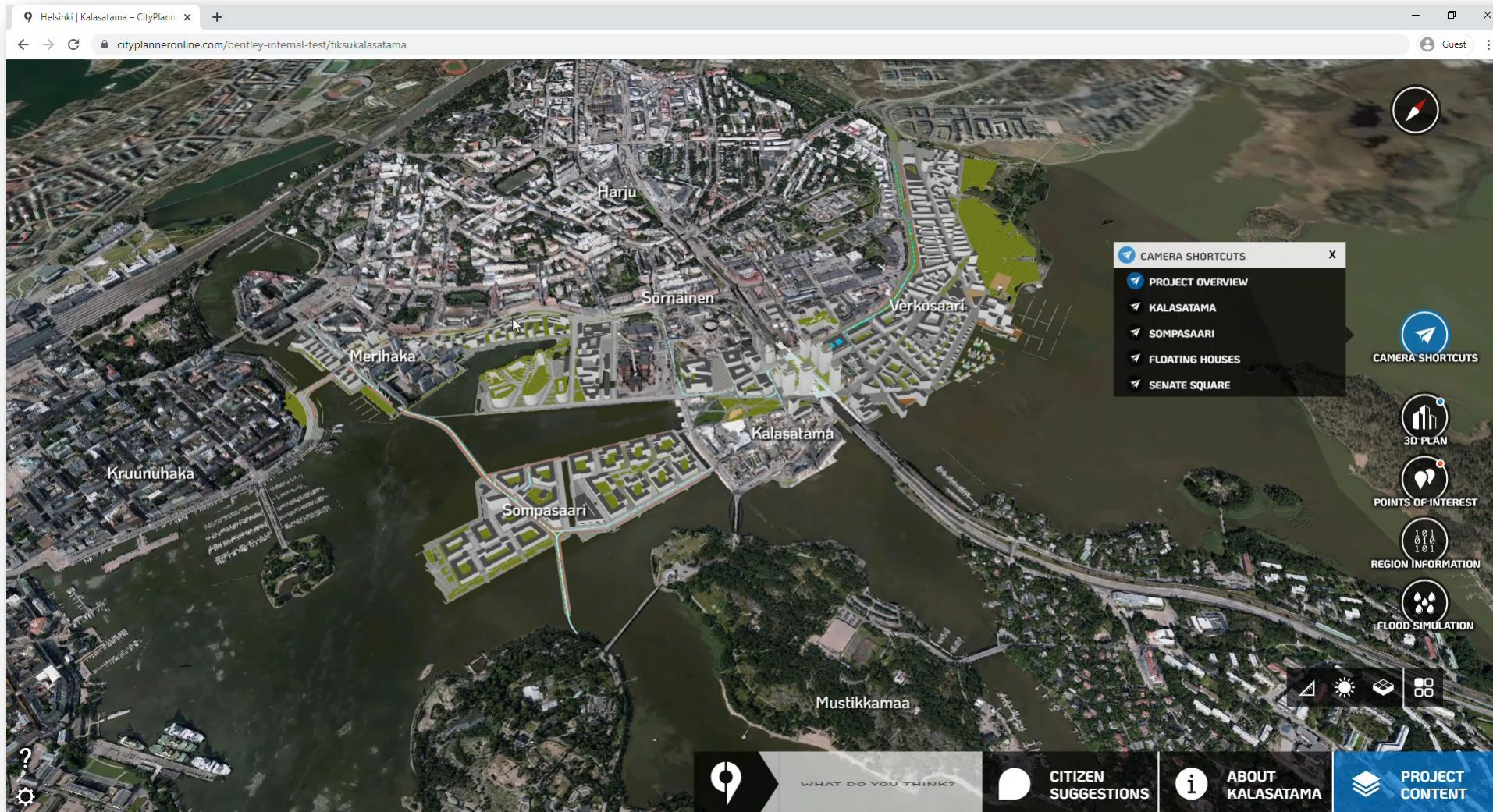
Slider UI

- Group setting

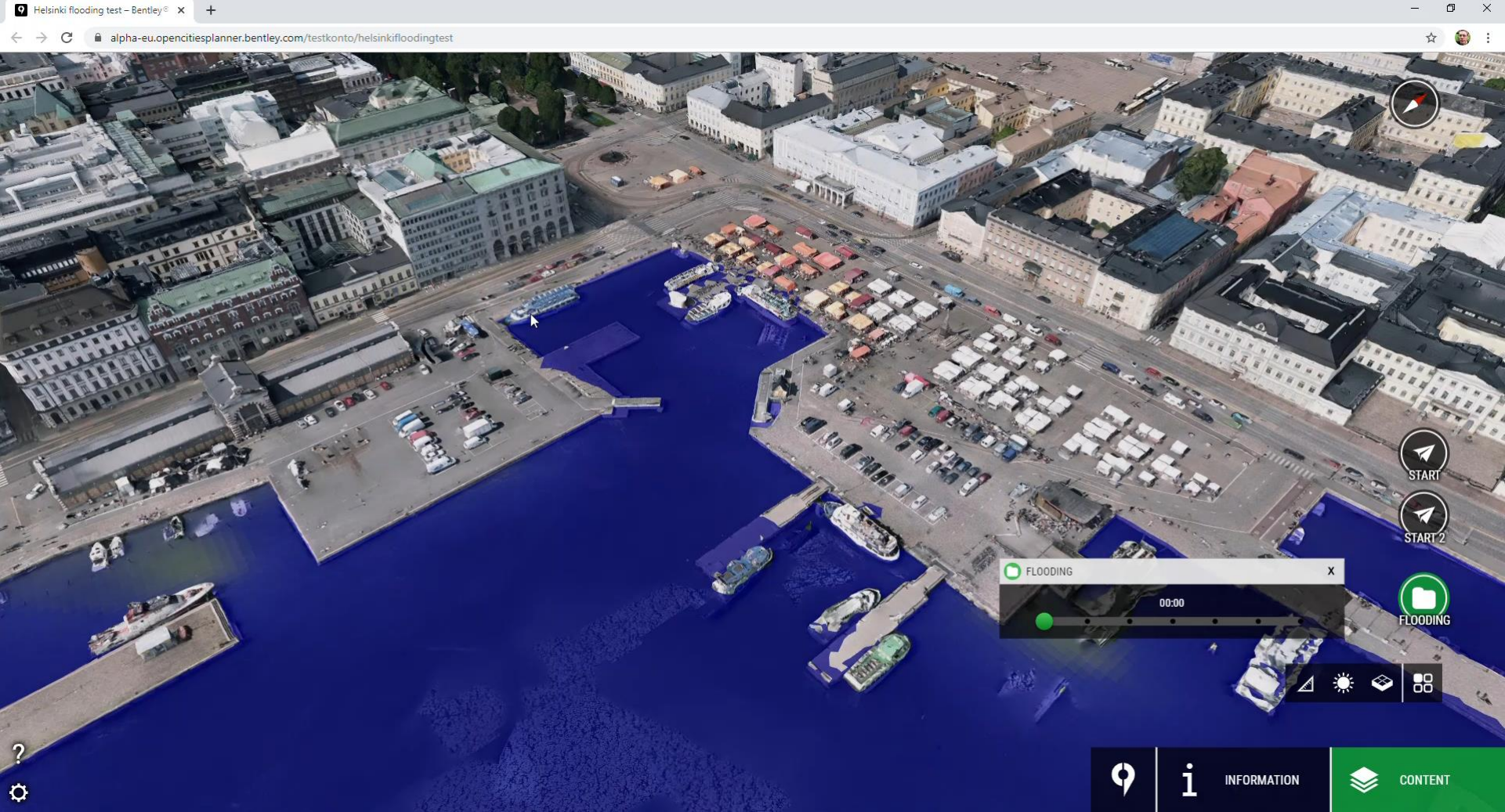
- Transforms standard group UI to slider UI
- Layers are steps along the slider
- Layer start views and object interactions still work as normal



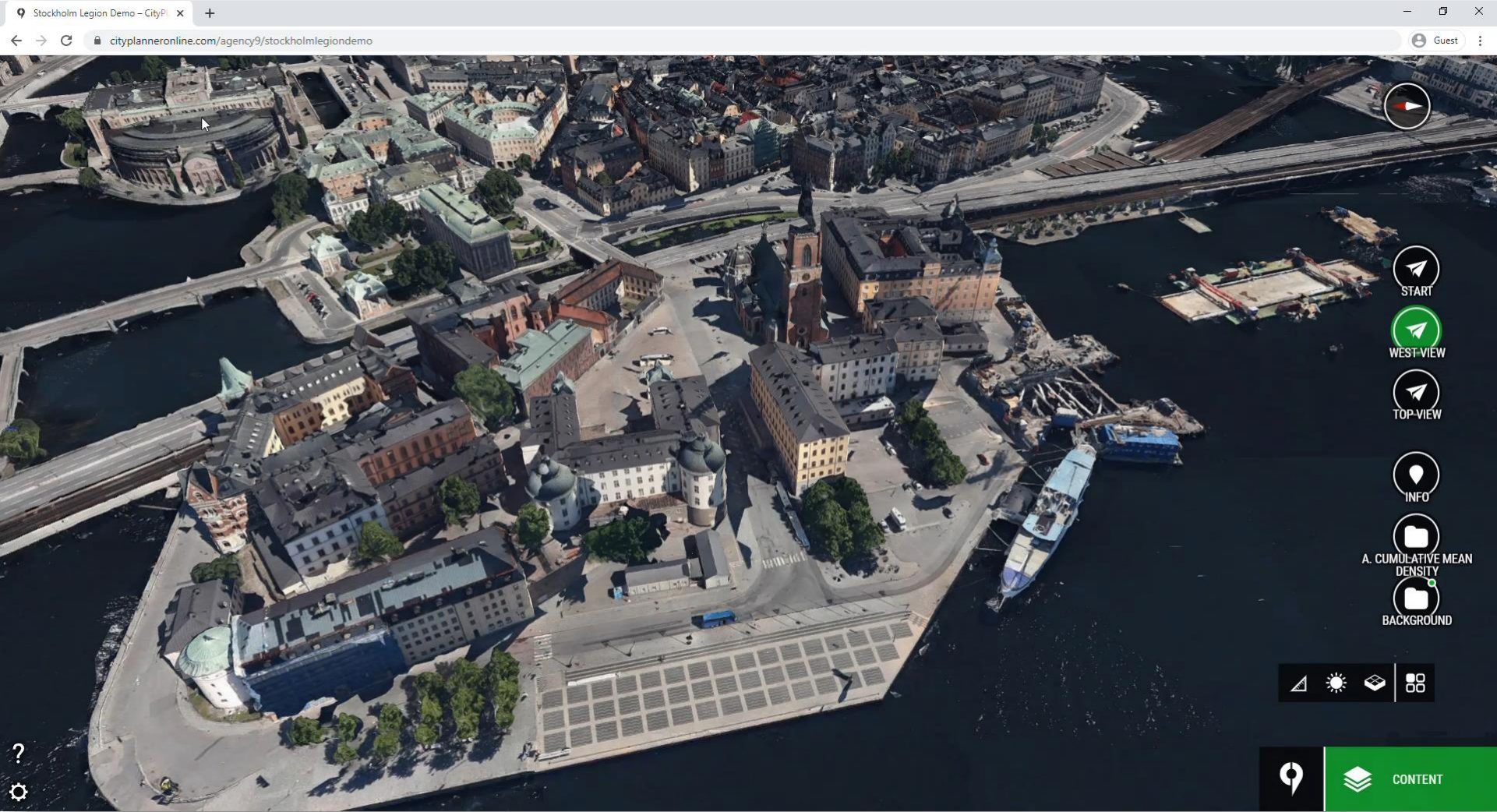
Flooding



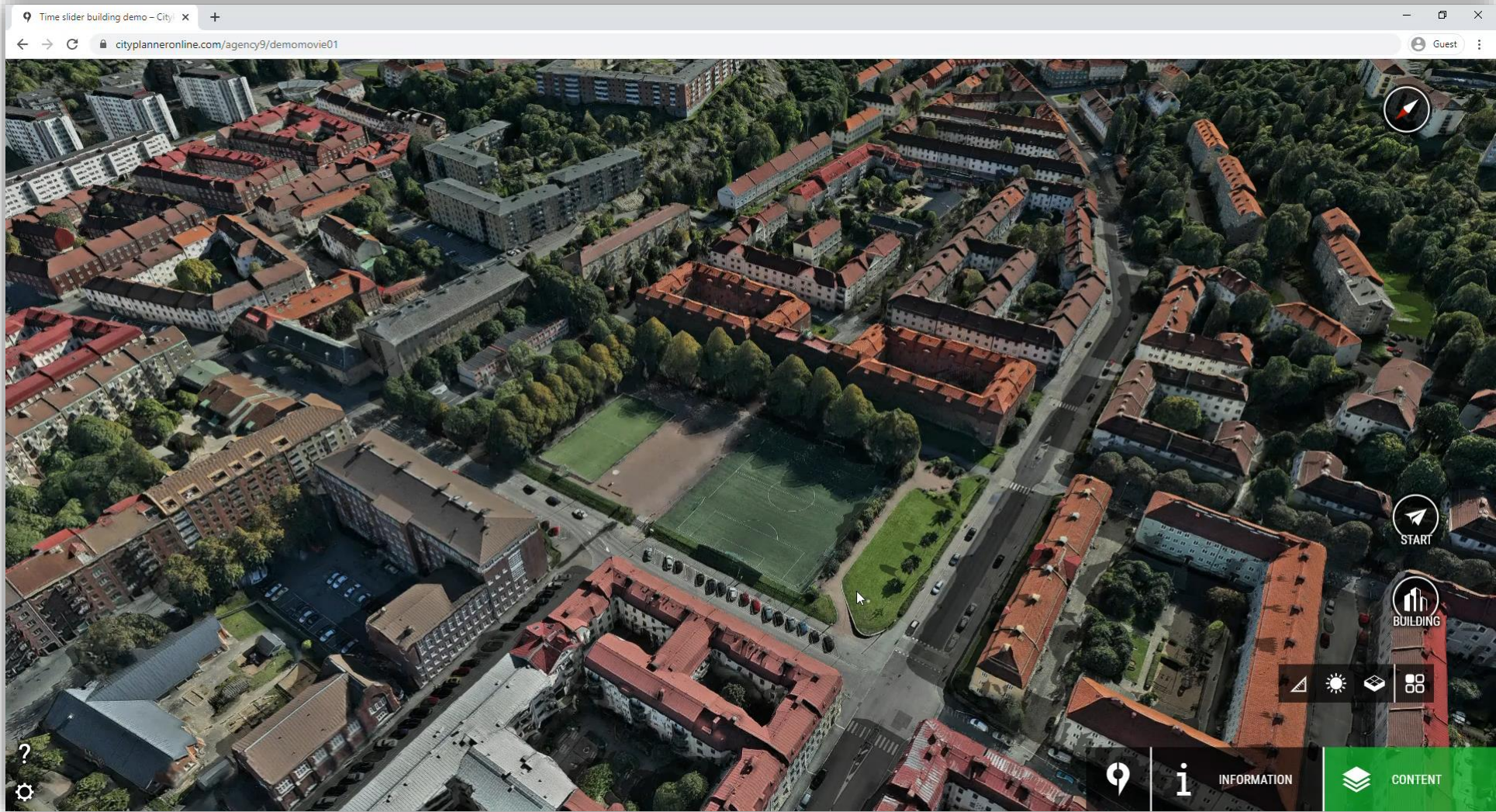
Flooding from Bentley OpenFloods



Bentley Legion crowd simulation

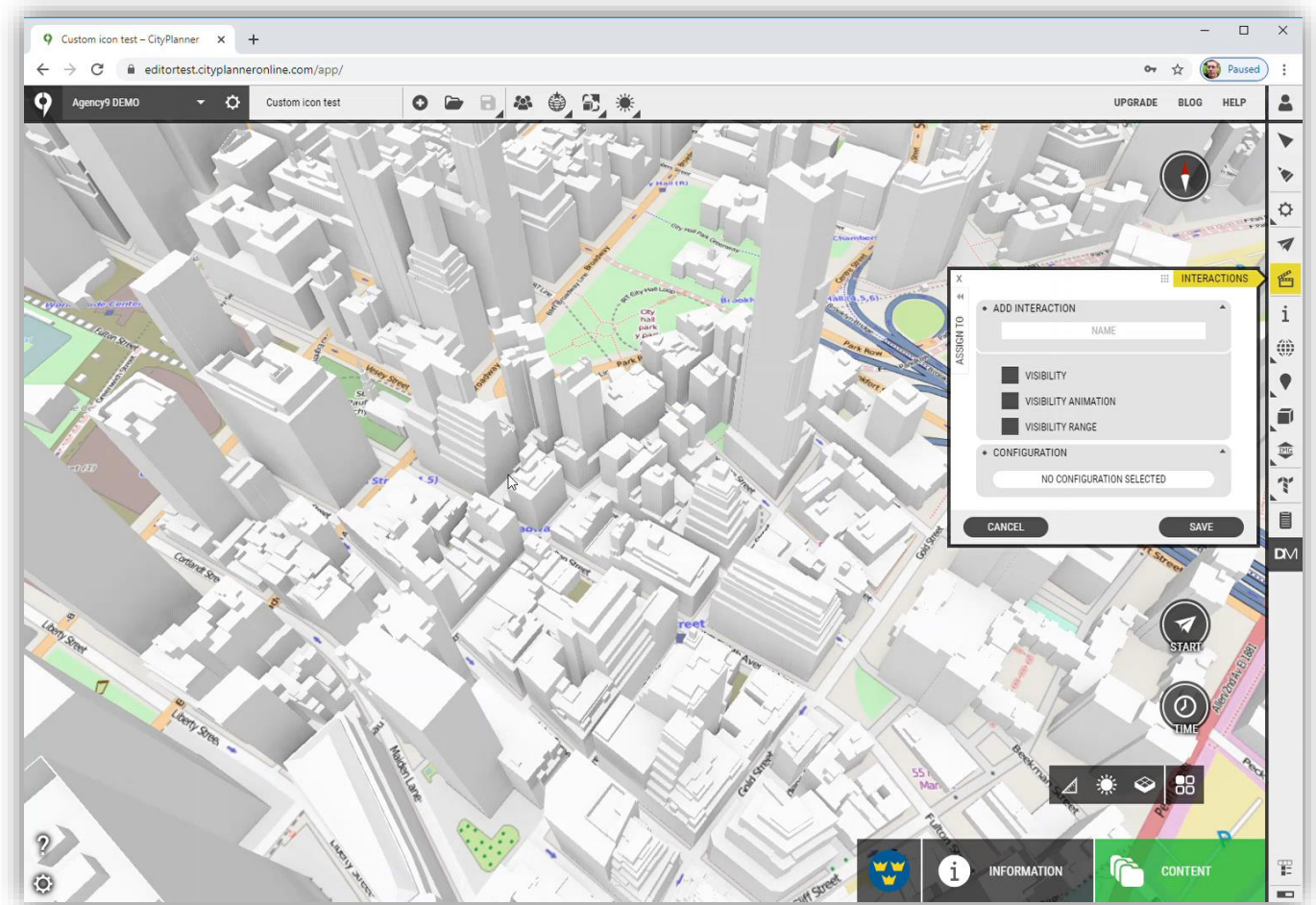


Building / Single project



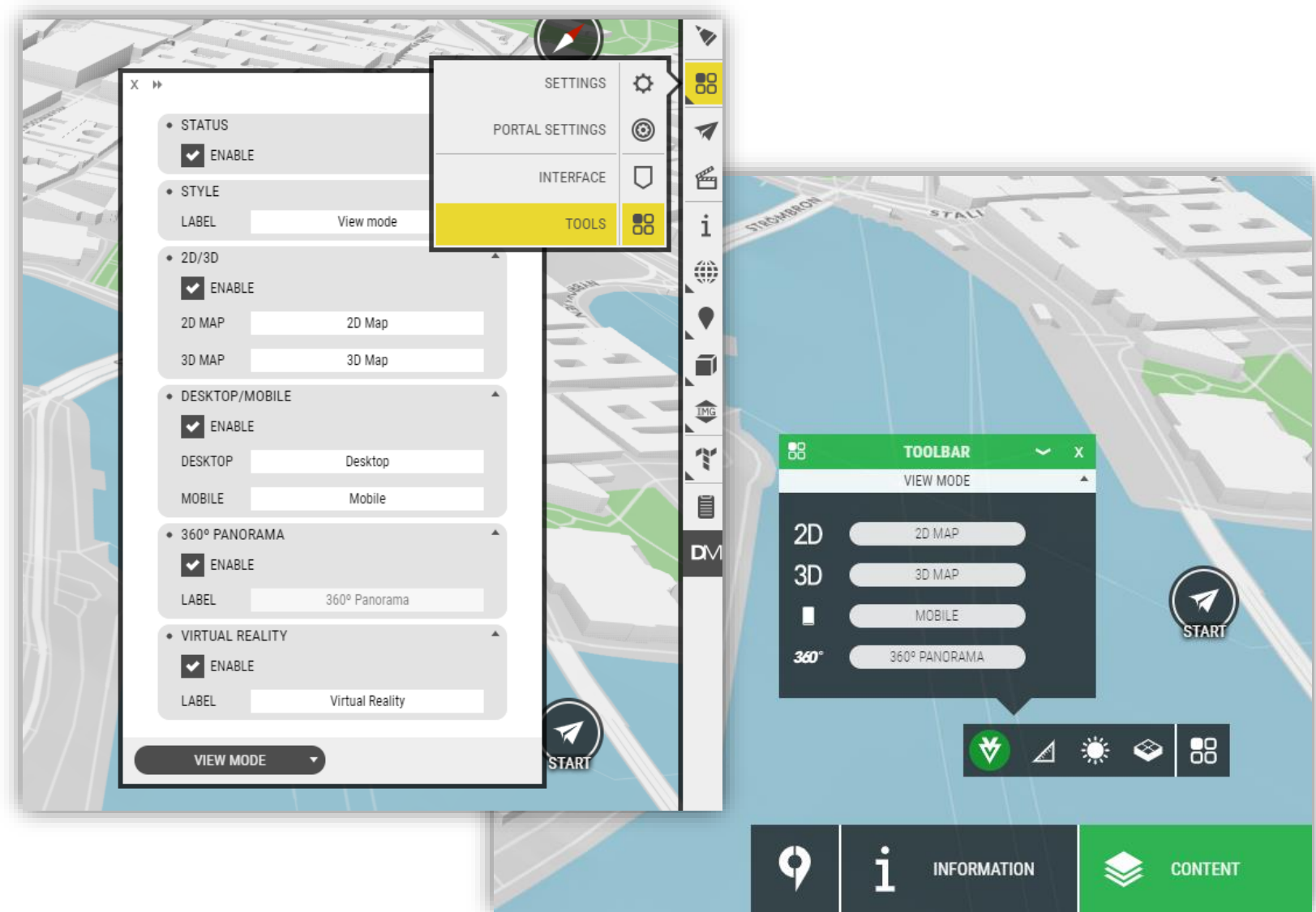
Multiselect for interactions

- Hold Shift to select many
- Modifiers CTRL and ALT to switch to Add or Remove modes
- Only for interactions right now



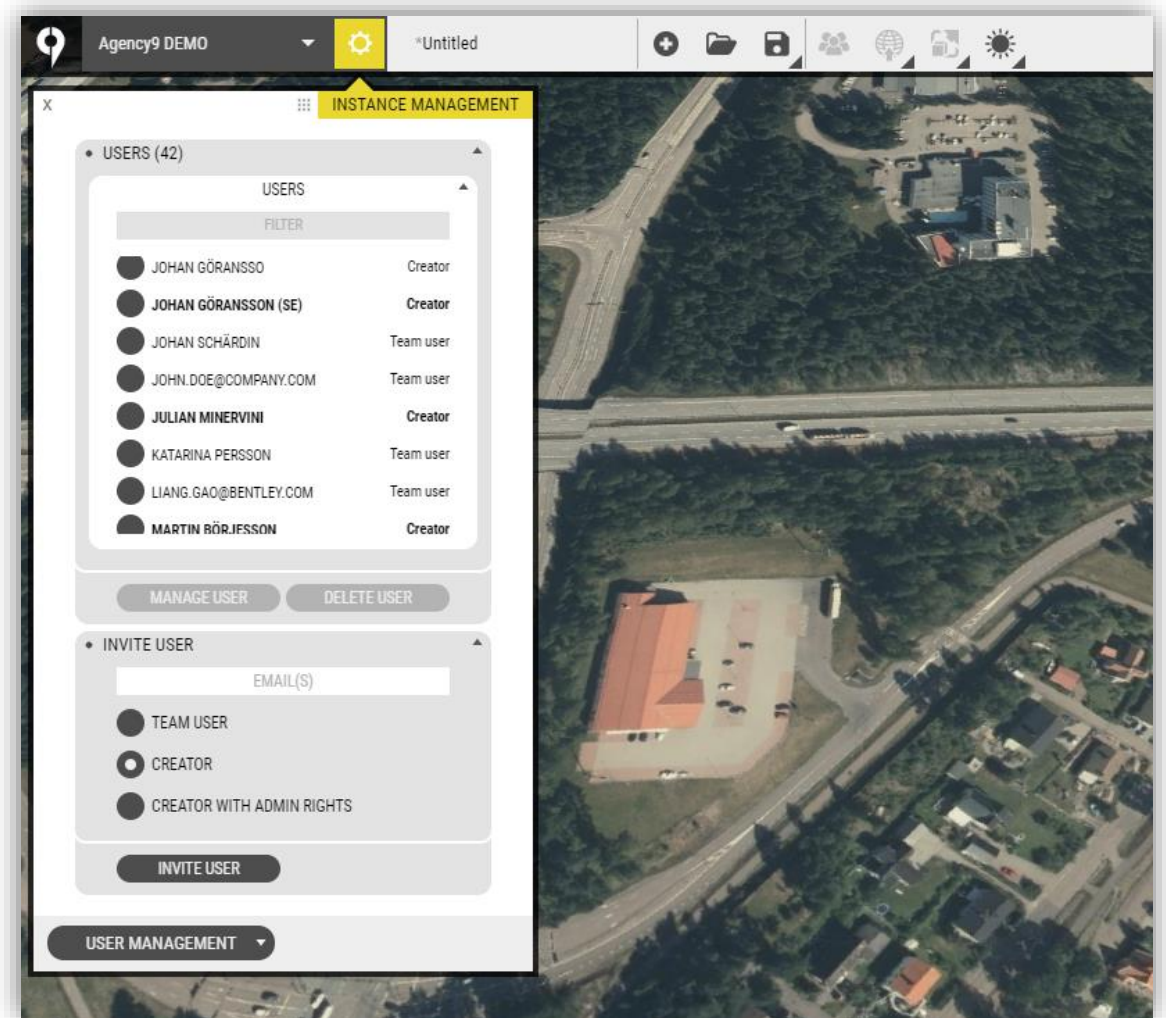
View mode select

- Switch between
 - 2D navigation
 - 3D navigation
 - Mobile UI
 - 360 Panorama
- In all Project View interfaces except Offline/ShowRoom



Minor changes

- Name changes
 - Organization renamed to Instance
 - And settings moved
 - ProUser/Editing is now a Creator
 - InfoUser/Viewing is now a Team user
 - Offline has been renamed to ShowRoom
- Viewing/Team users
 - Now have to be added to the Instance/Organization account before they can be added to a project
- Offline 4k fixes released
 - And more will come.



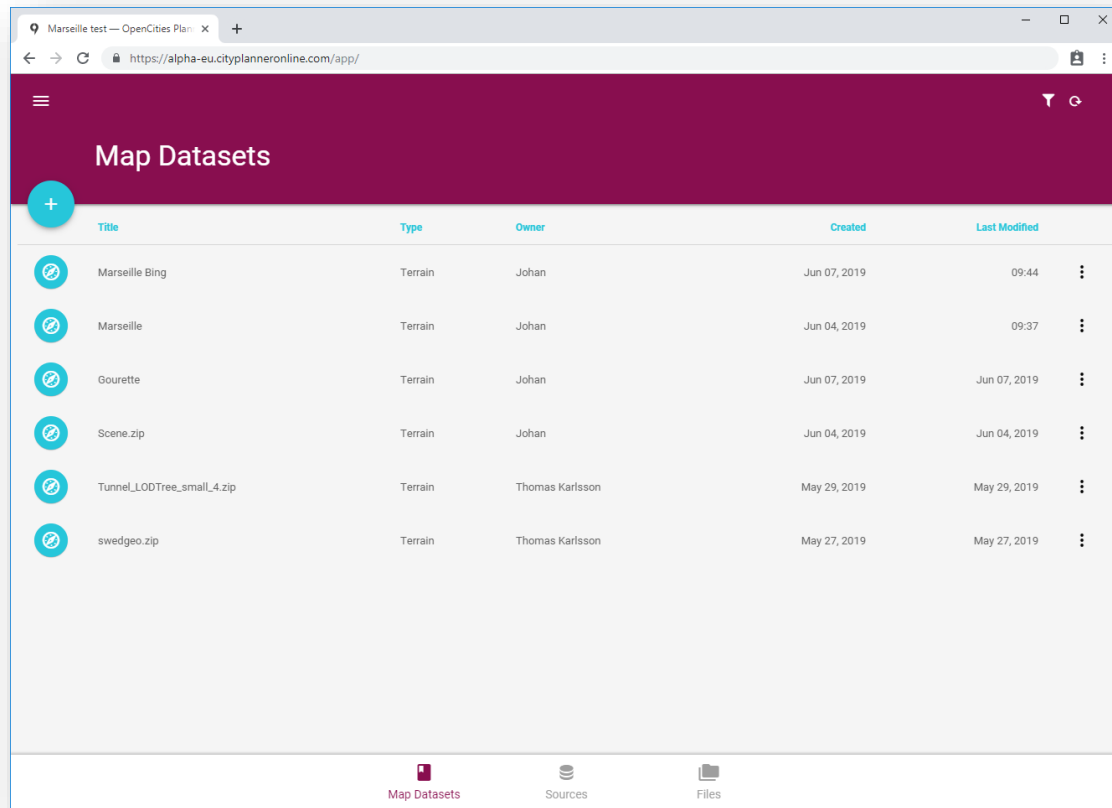
Minor changes

- Settings window
- Control
 - Free flight speed and invert navigation
 - Ground view height over ground
 - Field of view in Overview/Free flight and Ground view

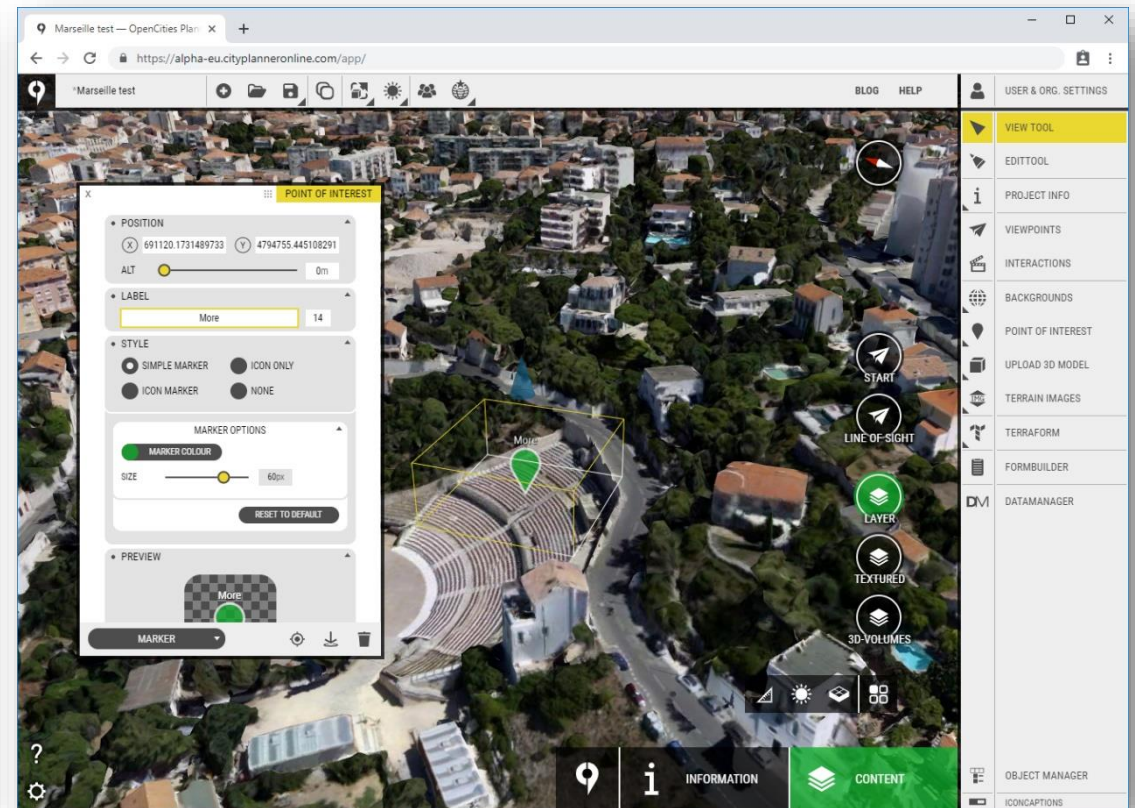


DataManager

DataManager



Project Editor



Files

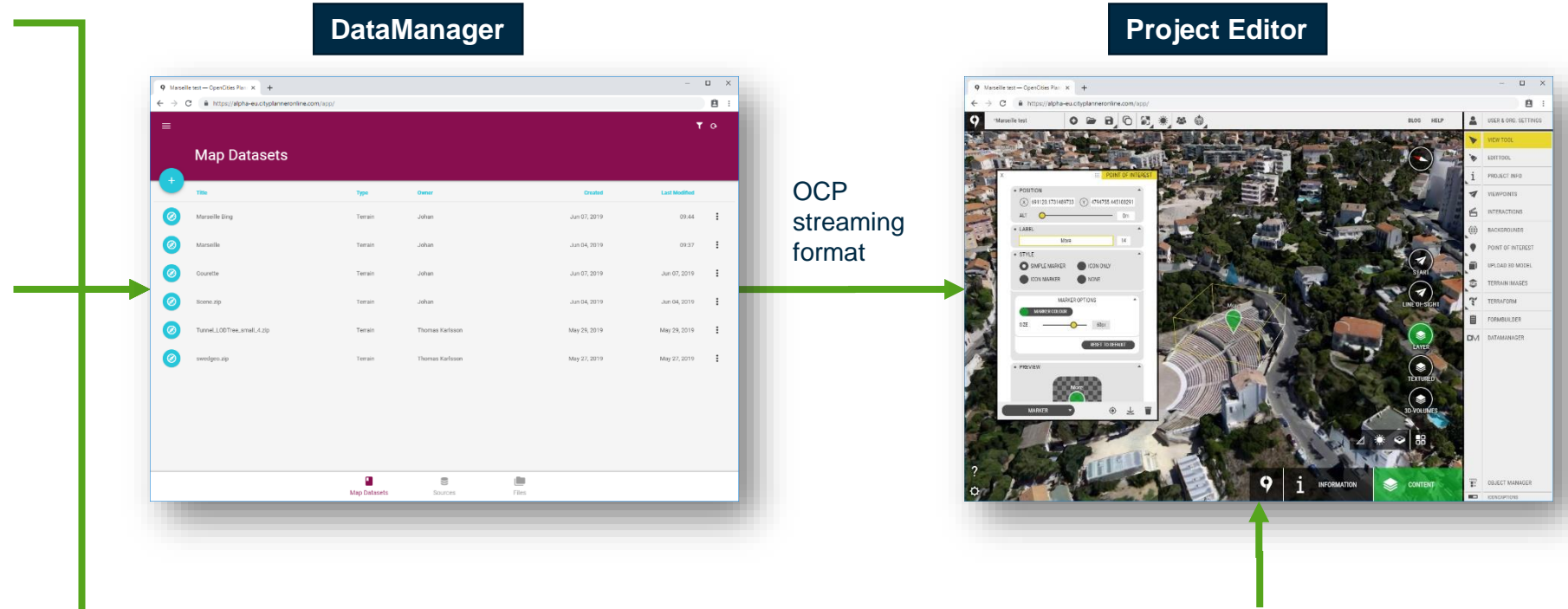
- 3D-models, such as a 3D city set
- DSM/DTM
- Ortho Images
- Reality Models
- Vector

Services

- WCS
- WMS
- Bing maps

Databases

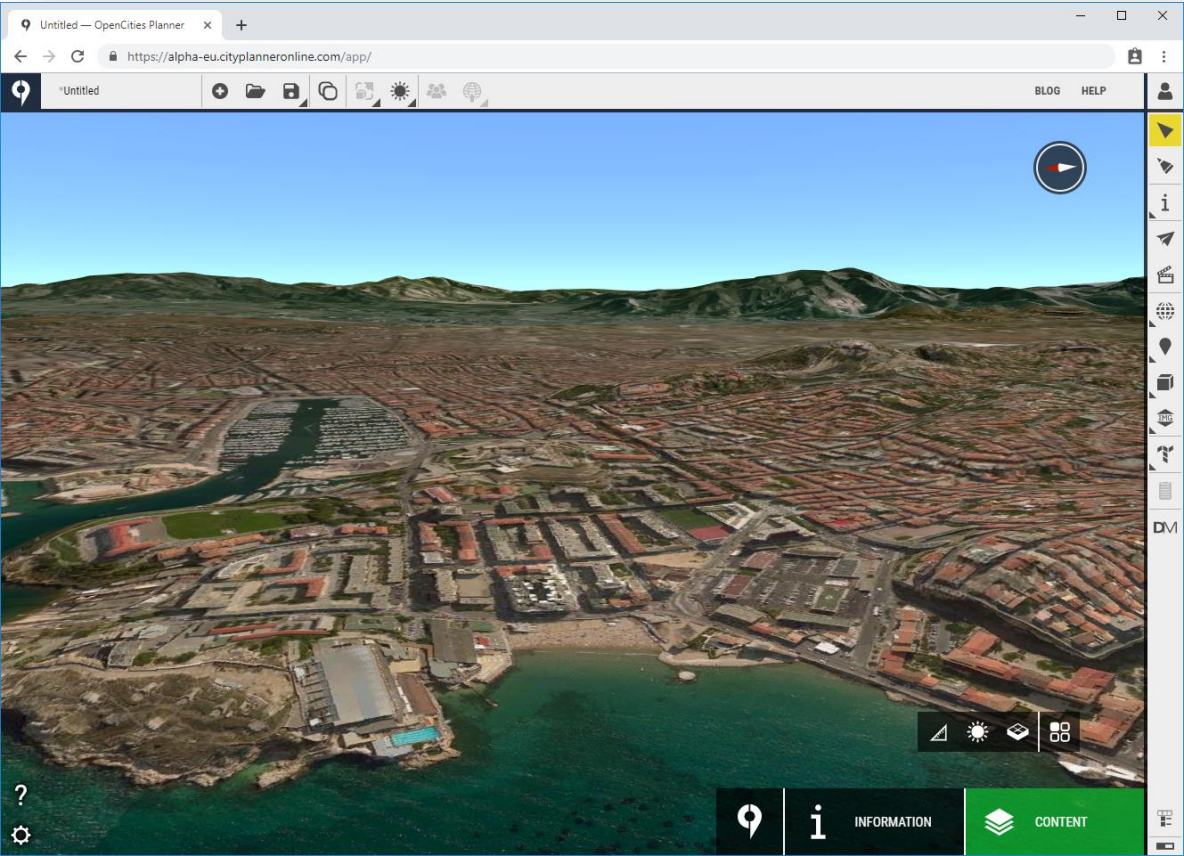
- Spatial databases such as Oracle Spatial, PostGreSQL etc
 - Geometry and attributes
- 3DCityDB (CityGML) or custom database layout



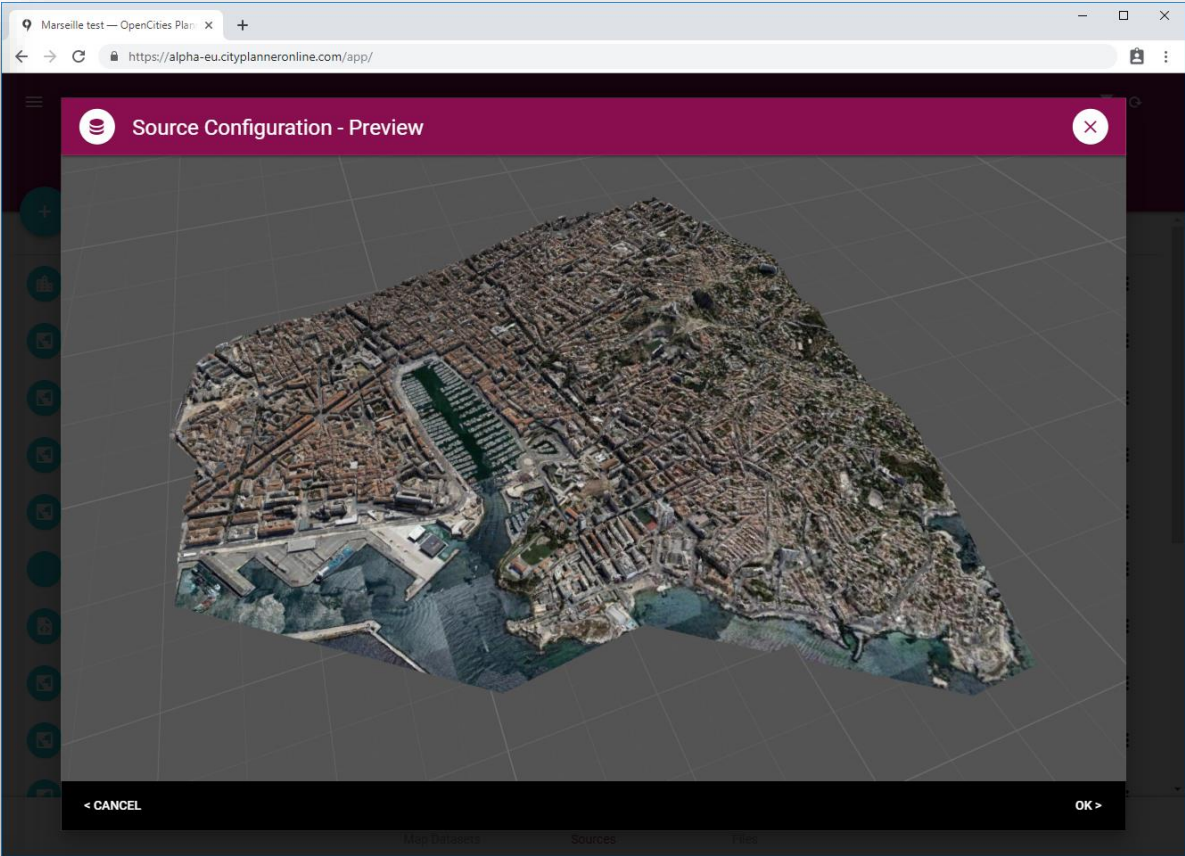
Project content

- WMS, Geo Images, Shape
- 3D CAD models
- Points of interest
- Questionnaire form
- Editor Tools: Sketching, Shadows, Videos

DataManager Reality Models

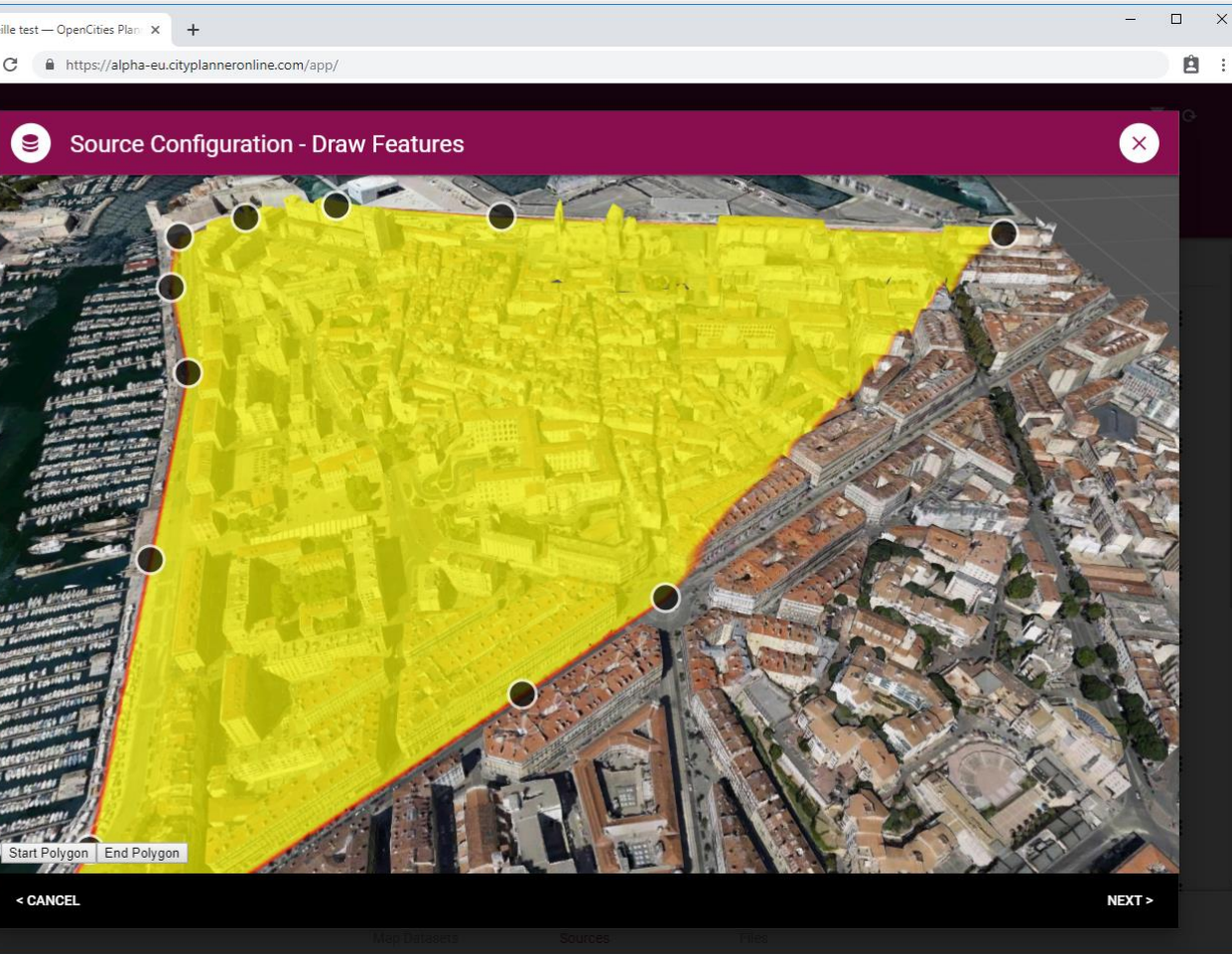


Bing maps

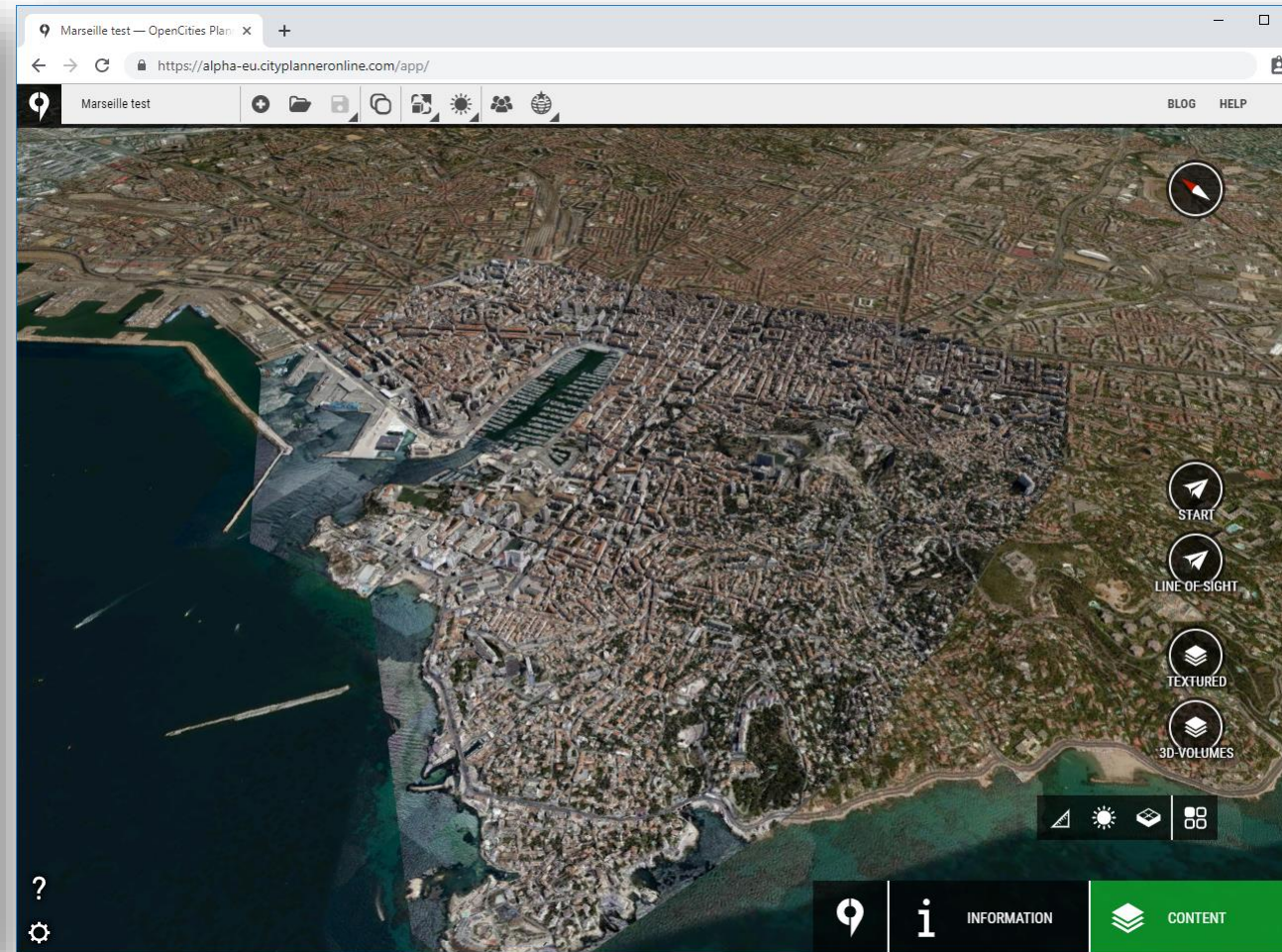


Reality model

OpenCities Planner - DataManager

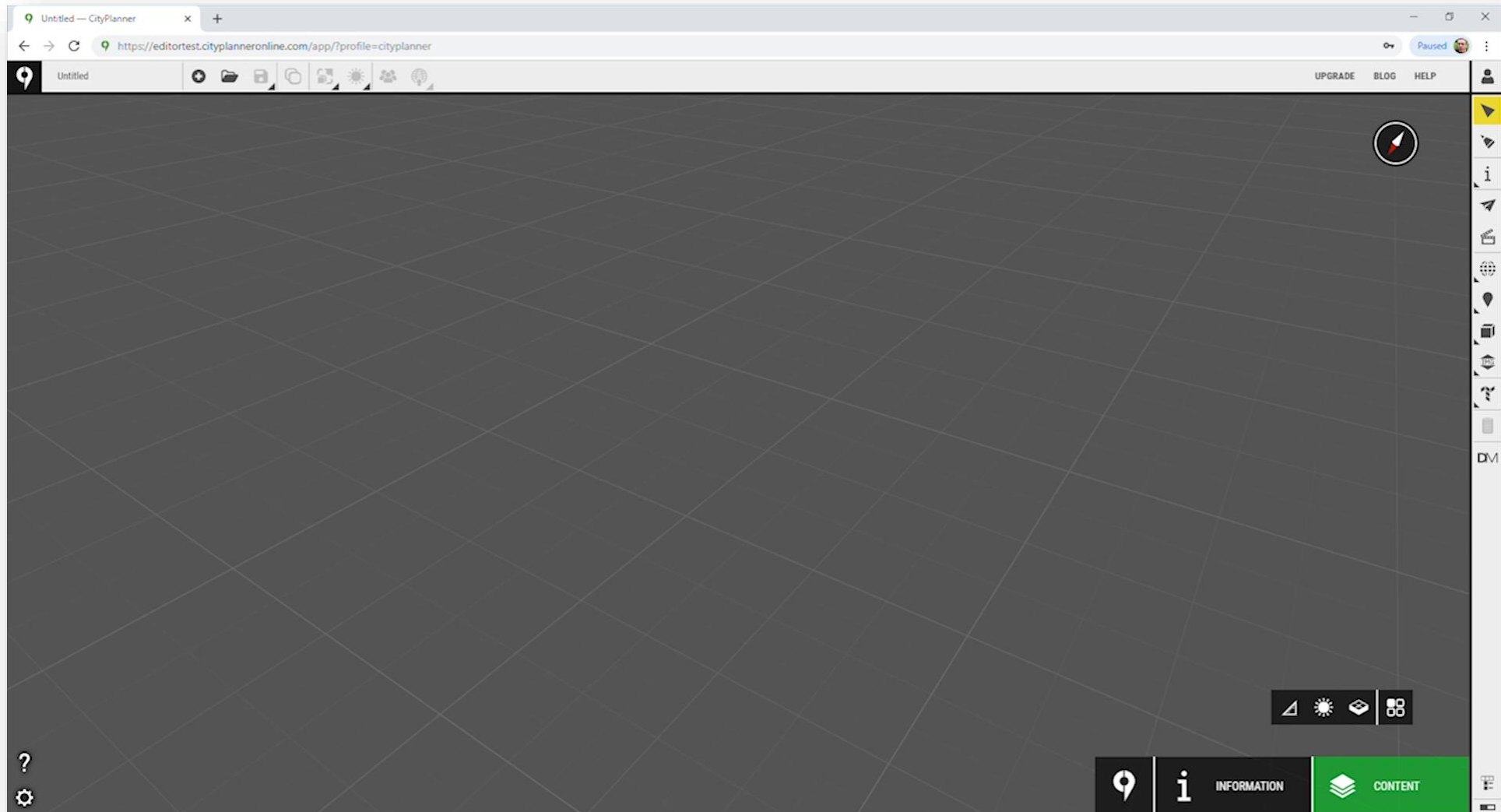


Draw or upload clipping polygon



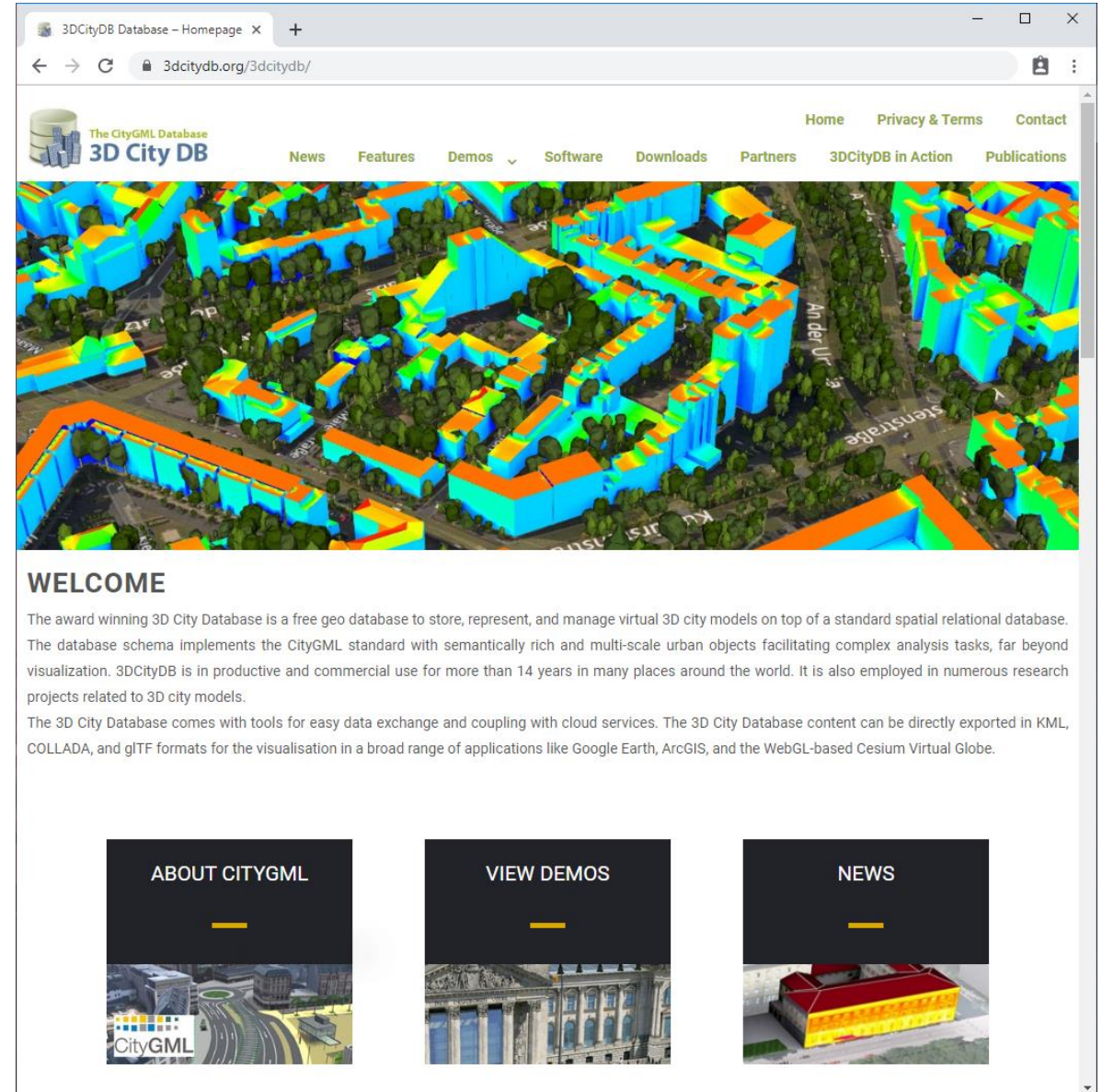
Merged datasets, loaded in OpenCities Planner

OpenCities Planner - DataManager



CityGML & 3DCityDB

- CityGML
 - OGC Standard for semantic 3D cities
 - LODs, textures, street furniture
- 3DCityDB
 - Database mapping of CityGML schema
 - Plug and play



3DCityDB Database – Homepage x +
3dcitydb.org/3dcitydb/

The CityGML Database
3D City DB

Home Privacy & Terms Contact
News Features Demos Software Downloads Partners 3DCityDB in Action Publications

WELCOME

The award winning 3D City Database is a free geo database to store, represent, and manage virtual 3D city models on top of a standard spatial relational database. The database schema implements the CityGML standard with semantically rich and multi-scale urban objects facilitating complex analysis tasks, far beyond visualization. 3DCityDB is in productive and commercial use for more than 14 years in many places around the world. It is also employed in numerous research projects related to 3D city models.

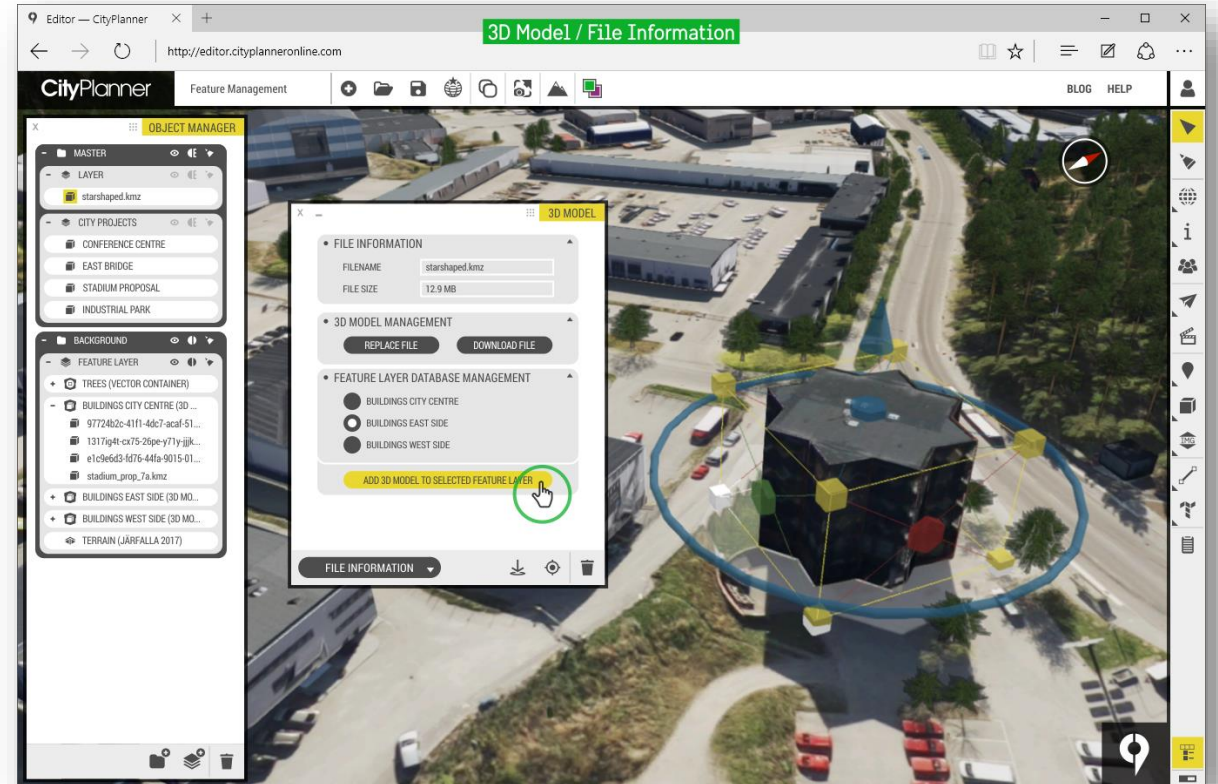
The 3D City Database comes with tools for easy data exchange and coupling with cloud services. The 3D City Database content can be directly exported in KML, COLLADA, and glTF formats for the visualisation in a broad range of applications like Google Earth, ArcGIS, and the WebGL-based Cesium Virtual Globe.

ABOUT CITYGML
VIEW DEMOS
NEWS

CityGML

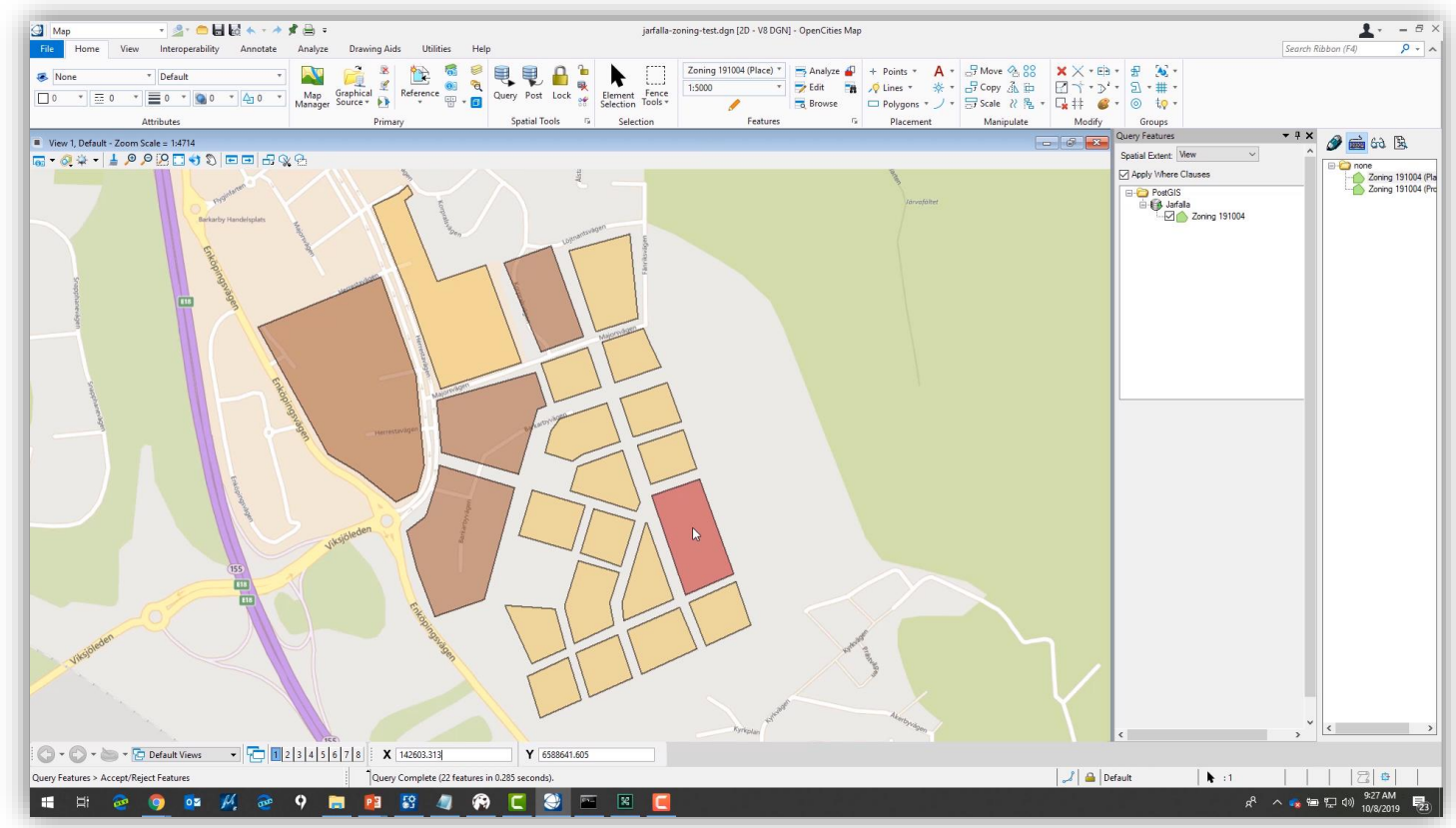
Updating the 3DCityDB

- If the source was set to Editable, you can:
 - Add
 - Remove
 - Update
 - Download
- In Editor:
 - Go to properties
 - Data sources
 - Edit Data Sources
- Edit and then Commit changes

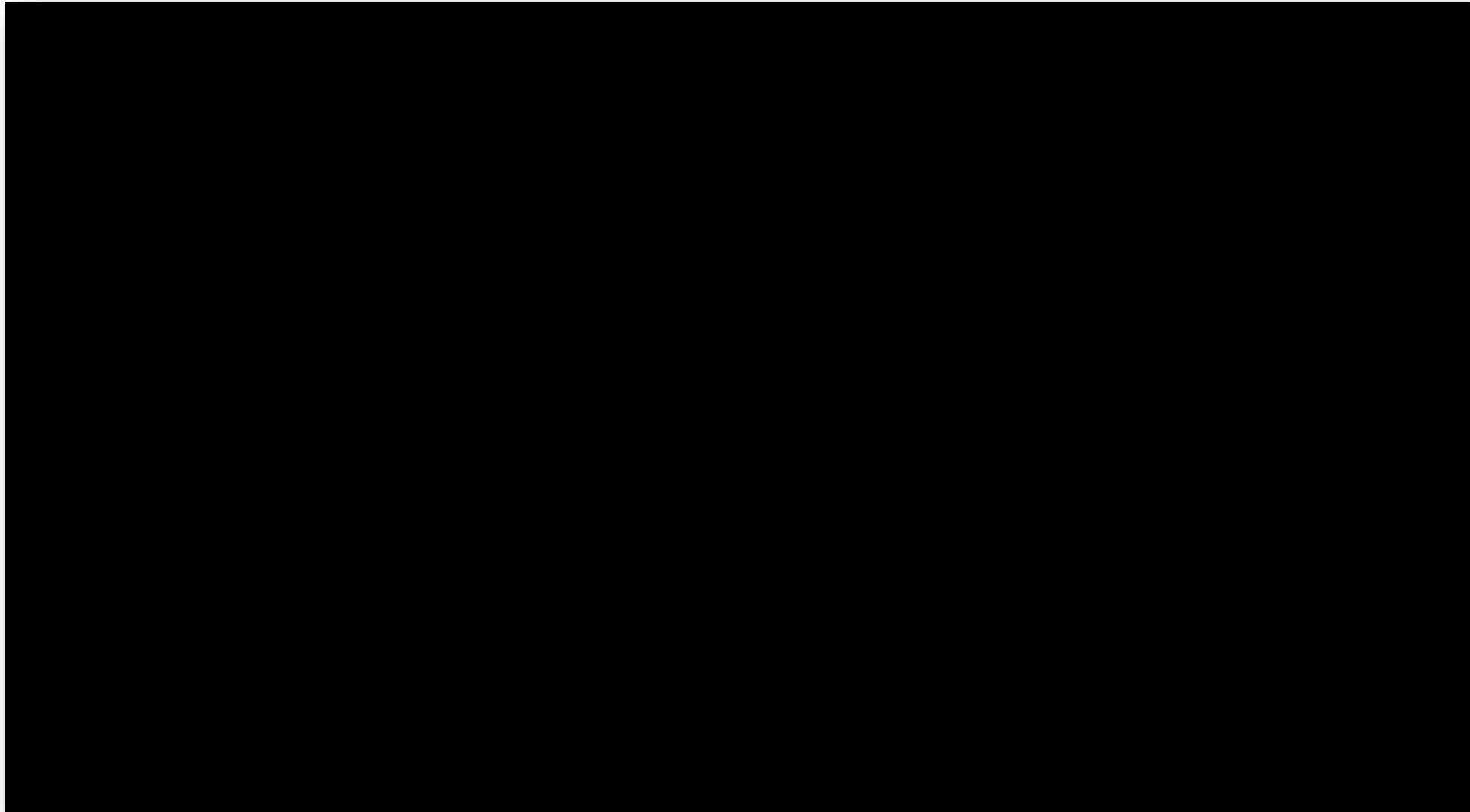


Generic geometry from Database

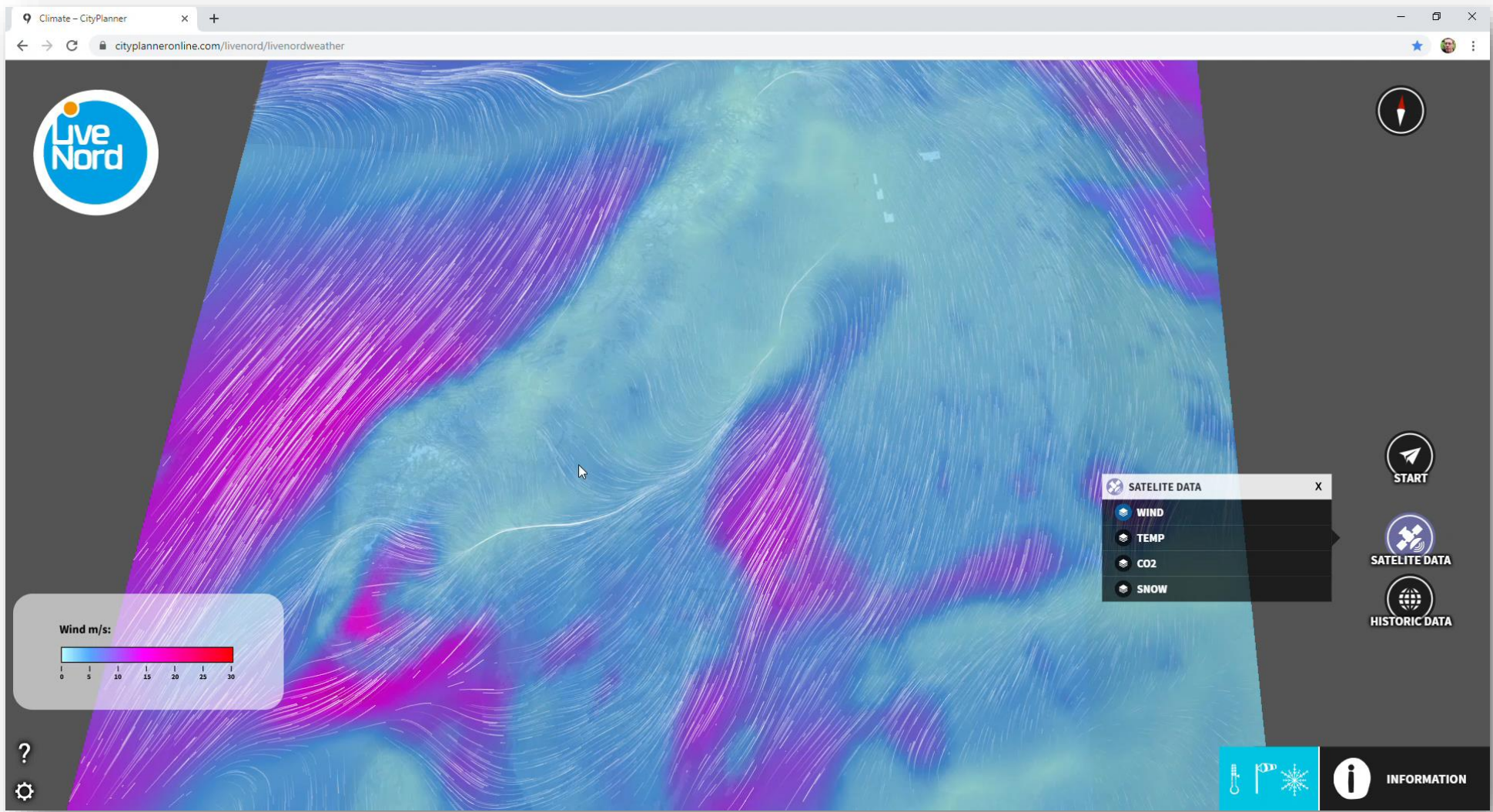
- Database preparation:
- User with read access to
 - Data as geometry
 - Points
 - Lines
 - Polygons
 - Attributes for extruding, colors, id



Microsoft Fraser Tower – IoT sensor integration



Flow animation



Smart city dashboard

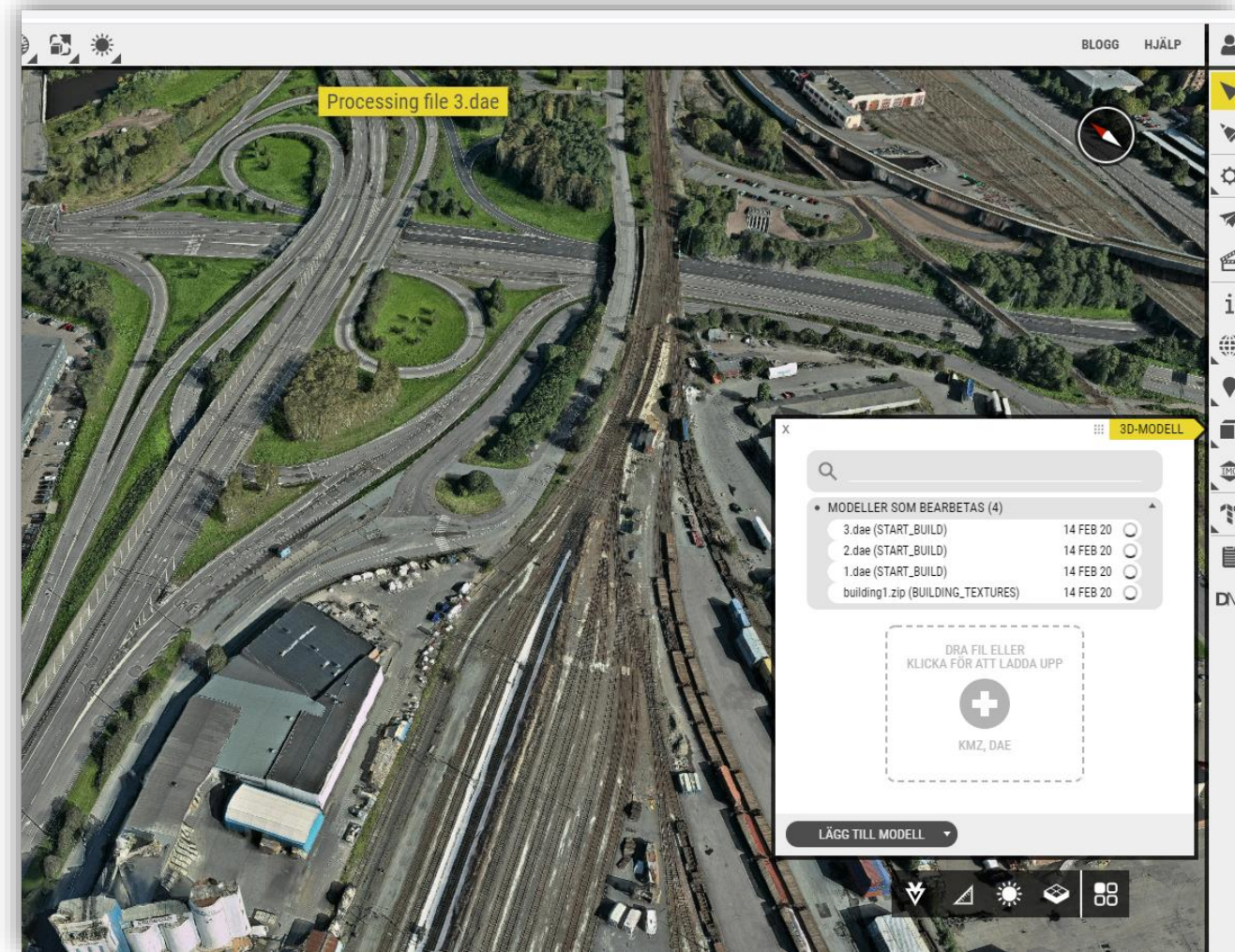


Roadmap

- Upcoming features
- Bentley Solutions Integration
- Migration to Azure

3D Uploads

- Multiple uploads without freezing the editor
- Initiate upload, process on server, notification when done



Multiselect



ShowRoom Azure

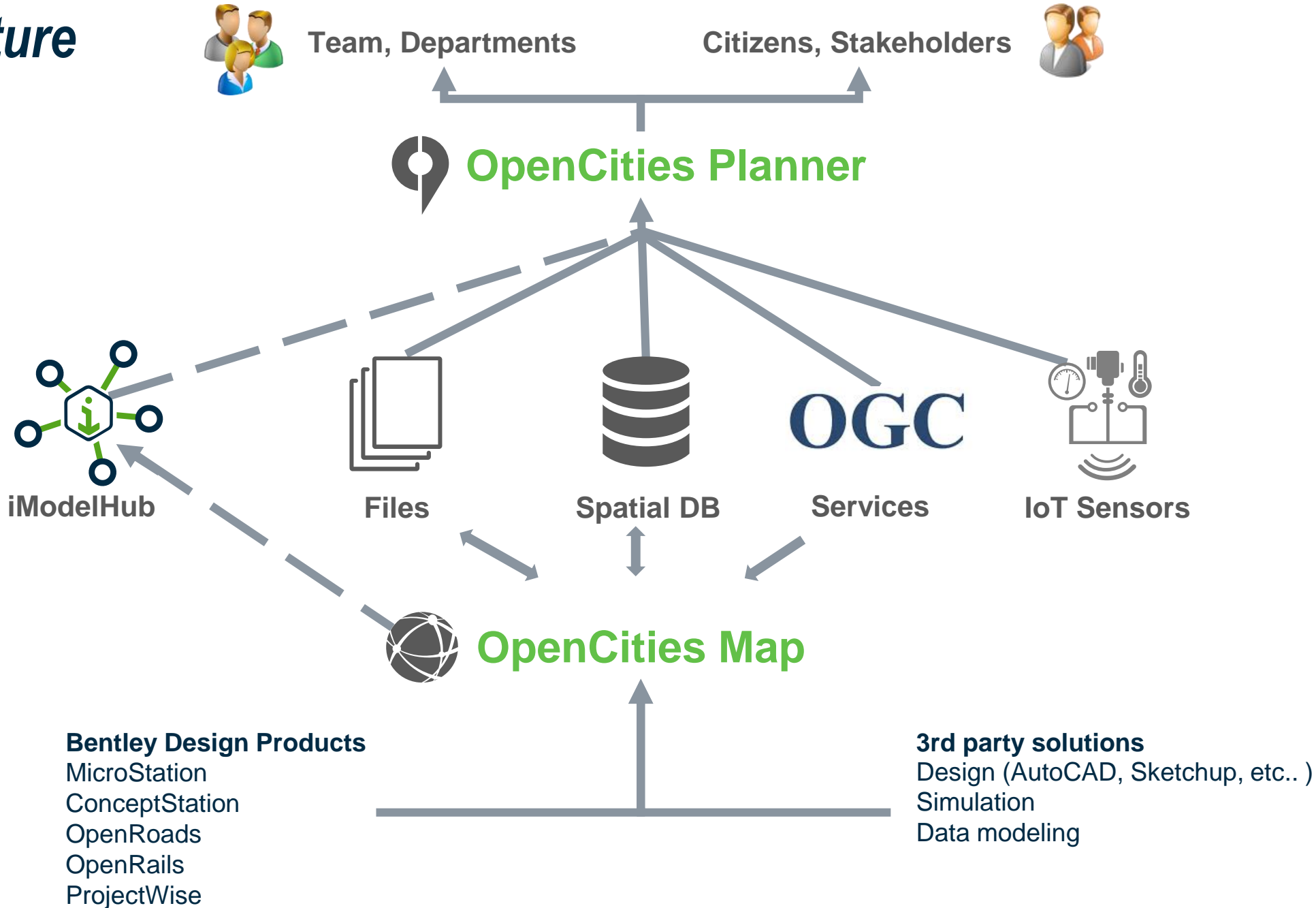
- No more License keys!
 - Exhibitor user role to use ShowRoom
 - Sign in, use anywhere
- Download ALL datasets via sync tool
 - Manual download and configuration not necessary
 - But still possible..



Bentley Ecosystem Integration

- OpenCities Map
- ContextCapture
- Orbit GT
- iModelJS /iModelHub
- And more!
 - Legion, OpenFlood, OpenRoads...

Architecture

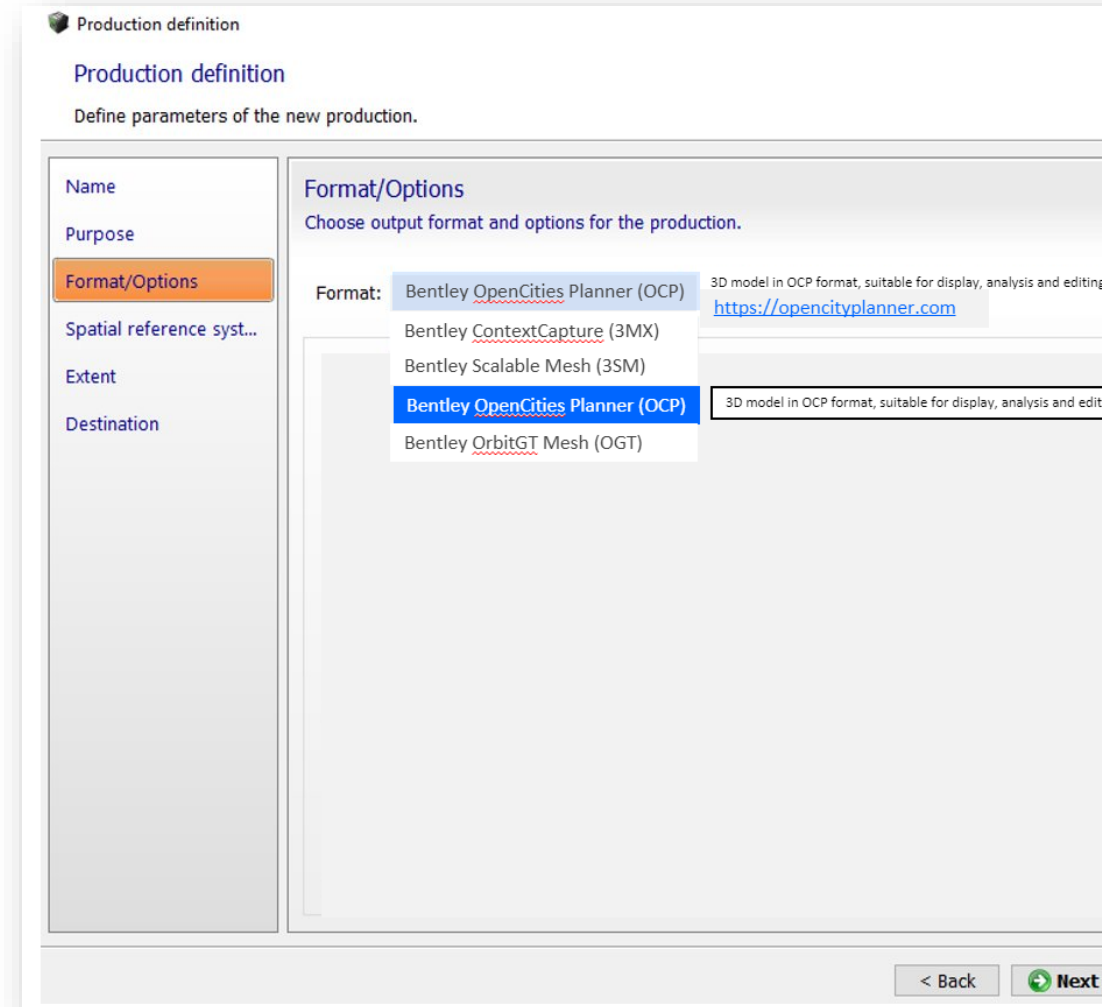


Bentley Solutions Integration

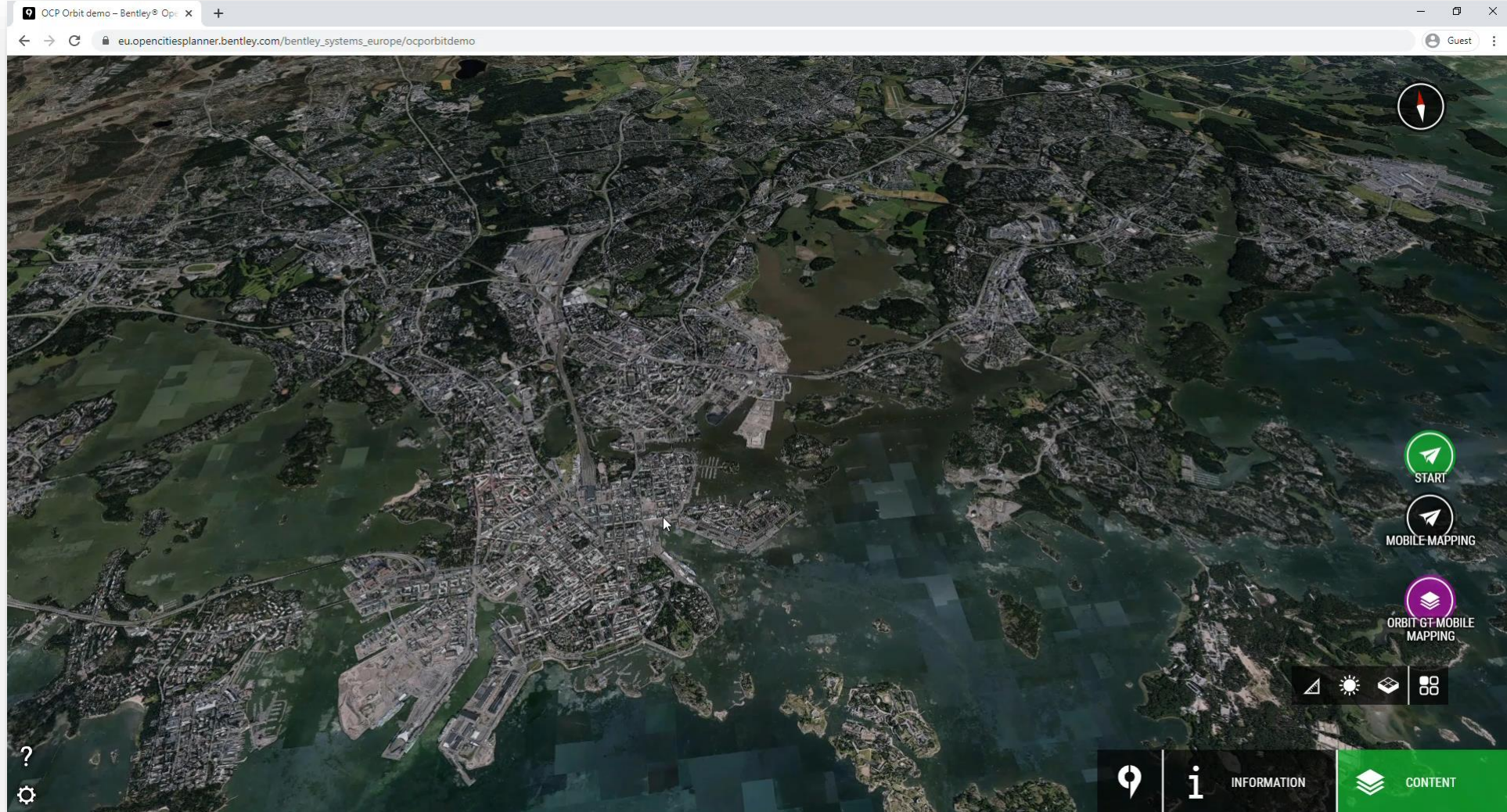
- OpenCities Map
 - Spatial data
 - Create, Edit & Manage with OCM
 - Publish and share with OCP
 - Spatial DB is the point of integration today, styling is not transferred though today
 - CityGML
 - Create, Edit & Manage with OCM
 - Publish and share with OCP
- Why?
 - OpenCities as a solution
 - Fill a gap for CityGML/3DCityDB users

Bentley Solutions Integration

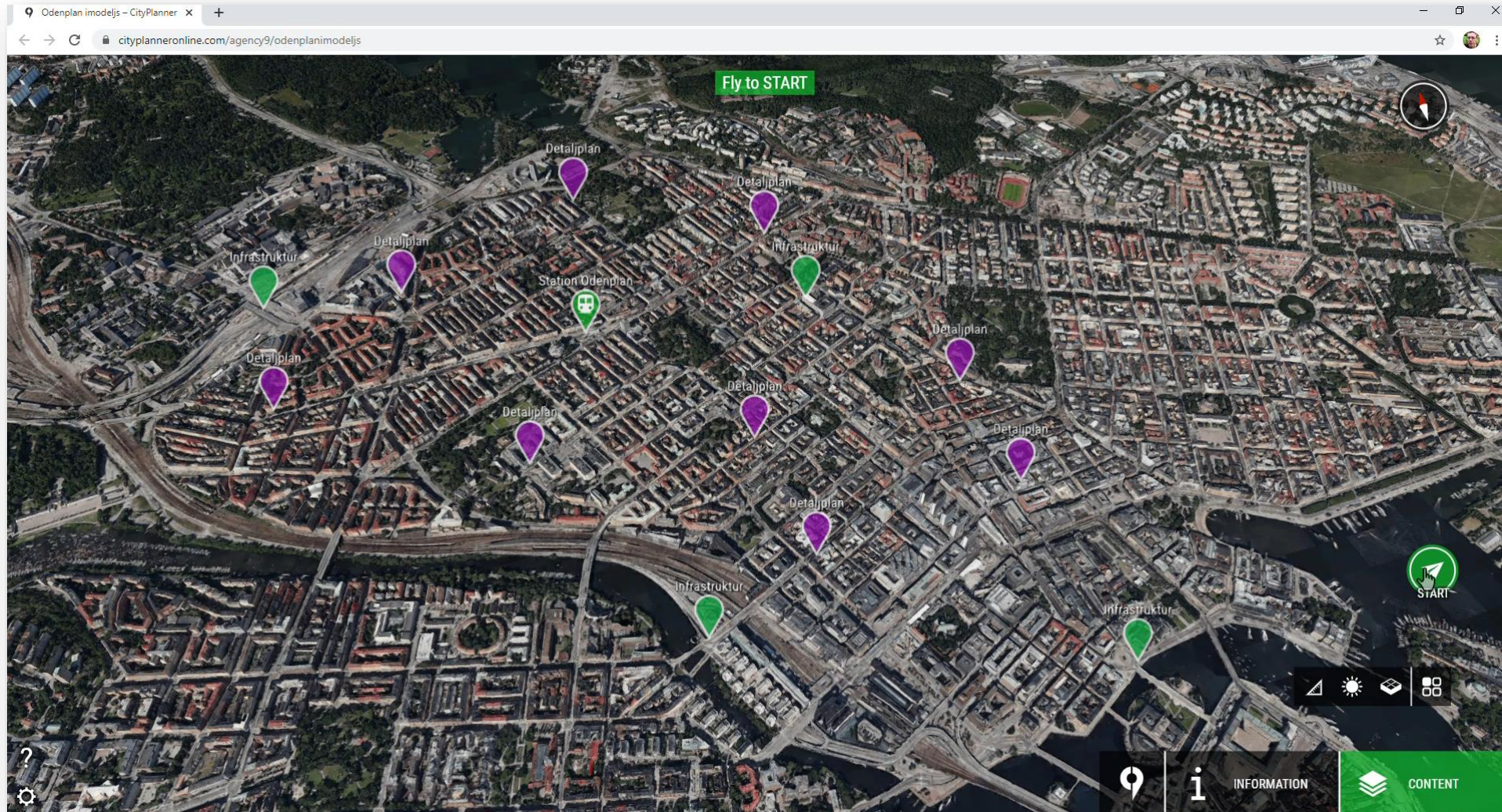
- ContextCapture & ContextShare
 - Publish directly to OCP
 - Handle format, settings, upload and configuration process automatically
- Why?
 - Smoother content pipeline saves time
 - Focus on generating great content and not have to worry about learning settings and management in different system



Orbit GT

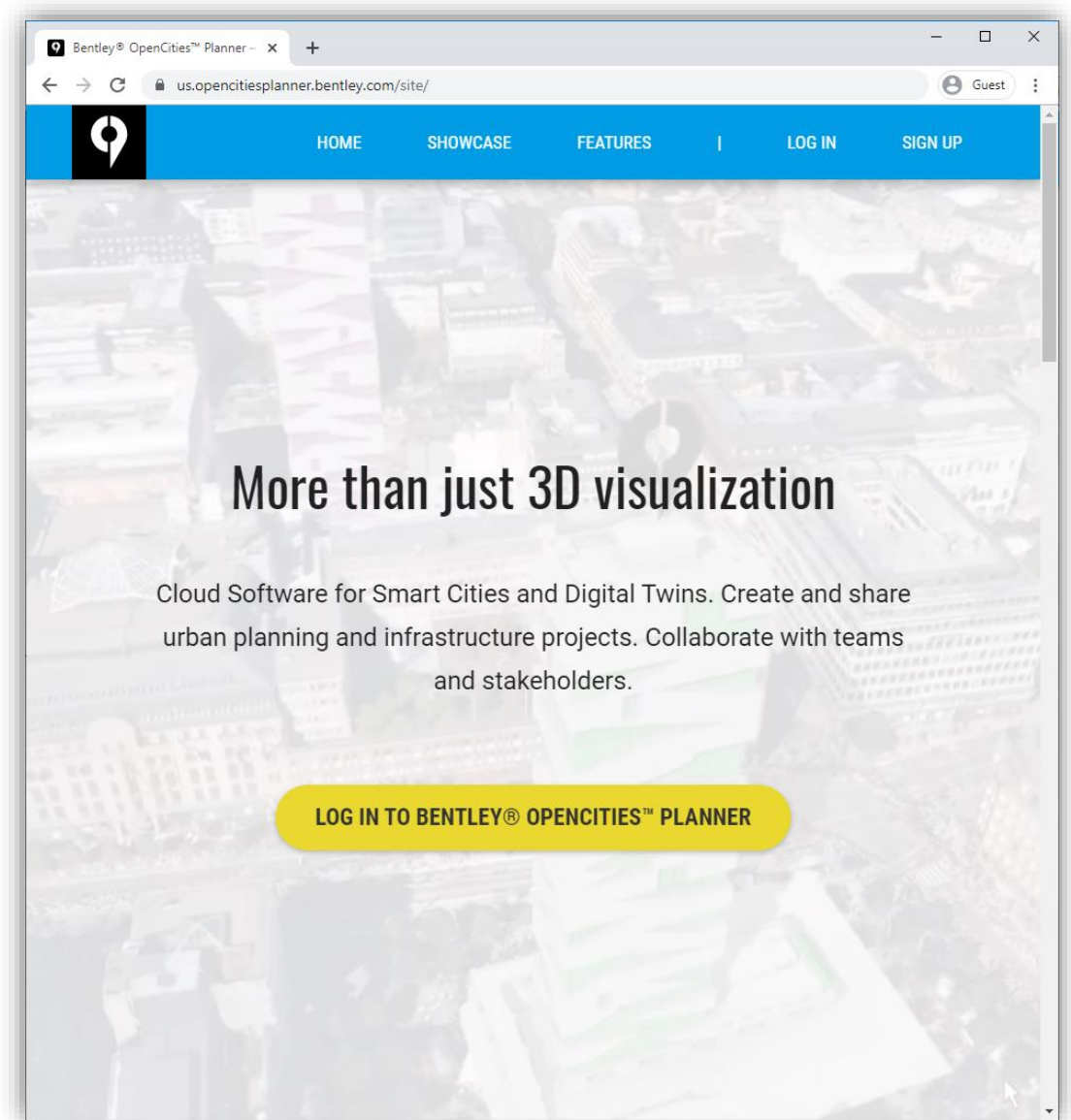


iModelJS and iModelHub for BIM & Engineering



OpenCitiesPlanner on Azure

- [Opencitiesplanner.bentley.com](https://opencitiesplanner.bentley.com)
- 4 zones today
 - Europe, North America, Asia, Australia
- Completely separated from cityplanneronline.com
- DataManager is **included** in OCP Azure



Price model on Azure

- **Instance Subscription**

- Base & Premium subscription
- “Base” only supports Files in DataManager
- “Premium” also supports Spatial Databases and services such as WMS & WCS

- **User types**

- Team user
- Creator user
- Exhibitor user

- **Consumption**

- Storage & Transfer
- Sufficient amount for most case is included in the Instance subscription

Migration

Fresh start / Test access

- Create a new Instance on Azure EU
- Get access to DataManager
- CityPlanner projects will keep existing and be accessible as usual
- Future merge with existing CPO account will not be possible

Available now

Full migration

- Projects, data & users migrated to Azure EU
- Published URLs will keep working
- CityPlanner account will be shut down after successful migration

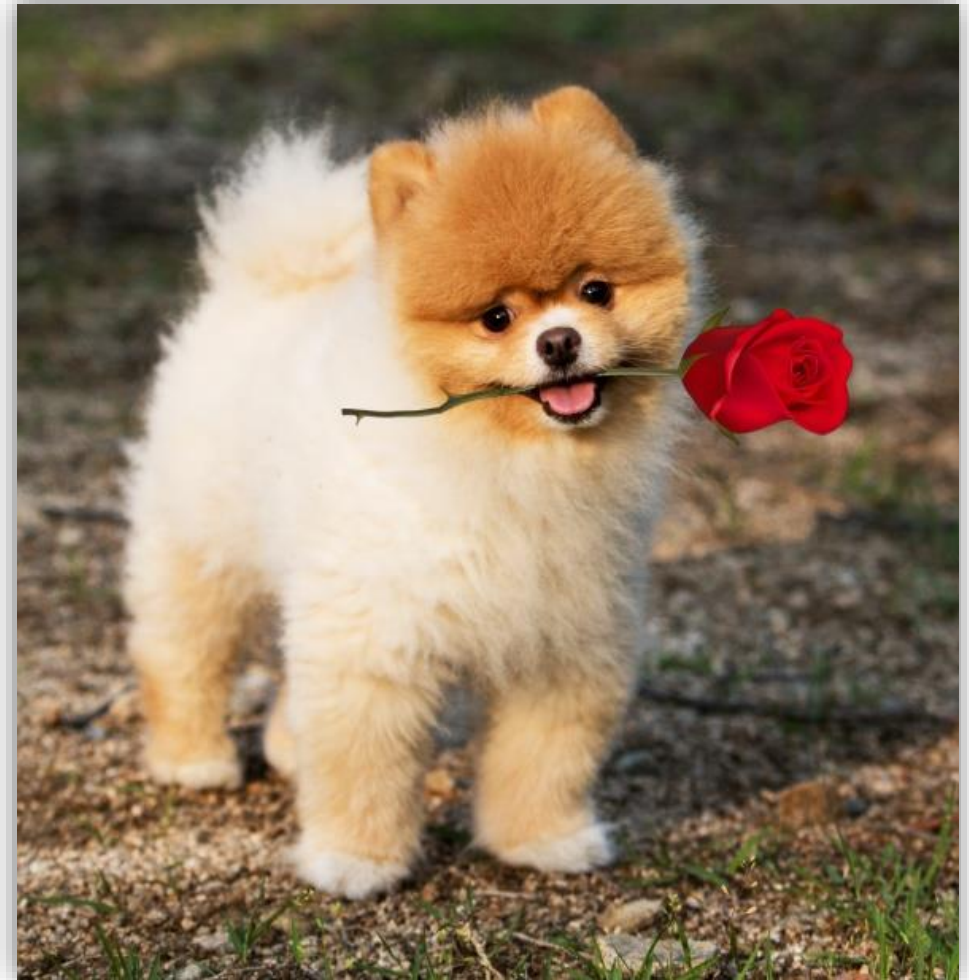
Planned start in June

CityPlannerOnline.com, Planned End of Life December 2020



As always.. We want to hear from you

- Channels
 - Support form
 - Bentley Communities
 - Email
- Bugs, problems but also ideas for how to improve OCP
- bit.ly/ocpmeetup2020



Frågor / Questions / Preguntas ?