



Bentley Digital Cities

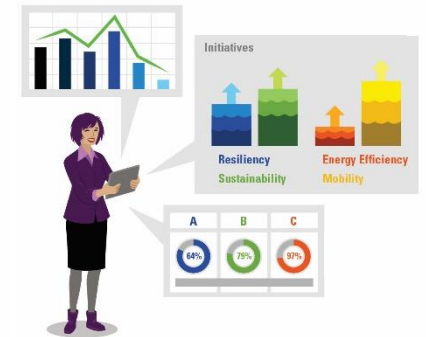
A Comprehensive Portfolio for
Reality Modeling and Mapping Workflows

Digital Twin



Model, analyze and simulate to improve performance & predict outcomes

- Planning and visualization
- Stakeholder engagement
- Infrastructure resilience



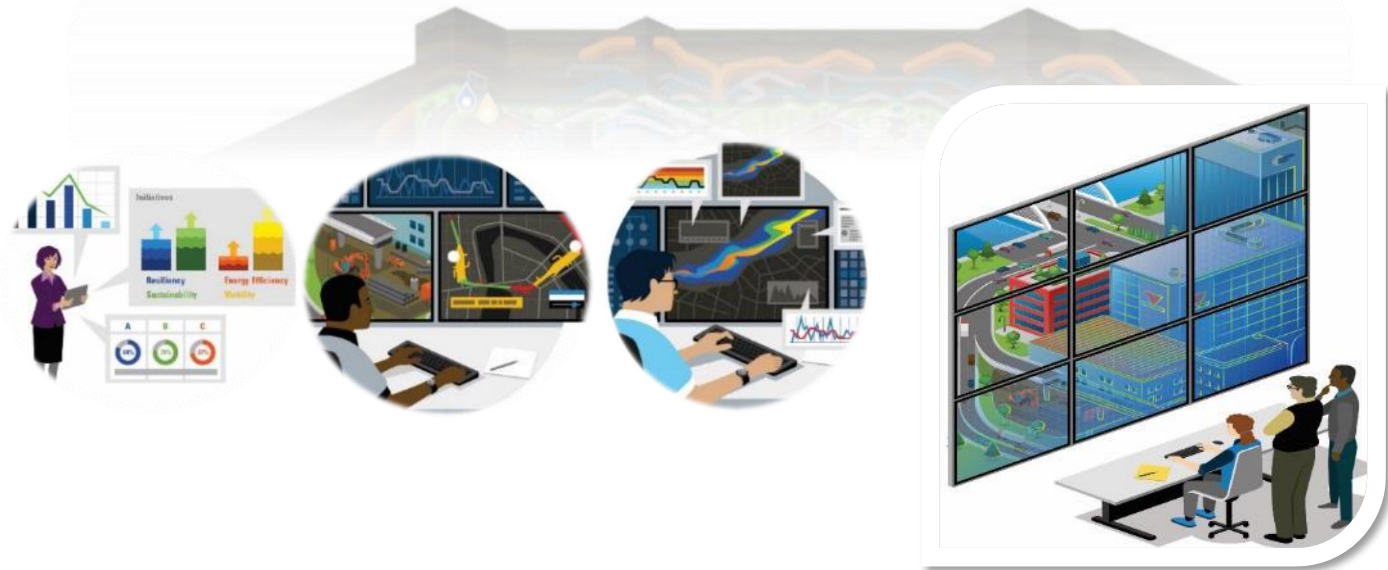
Create and visualize digital twin at city-scale



Support smart city initiatives with digital city operations

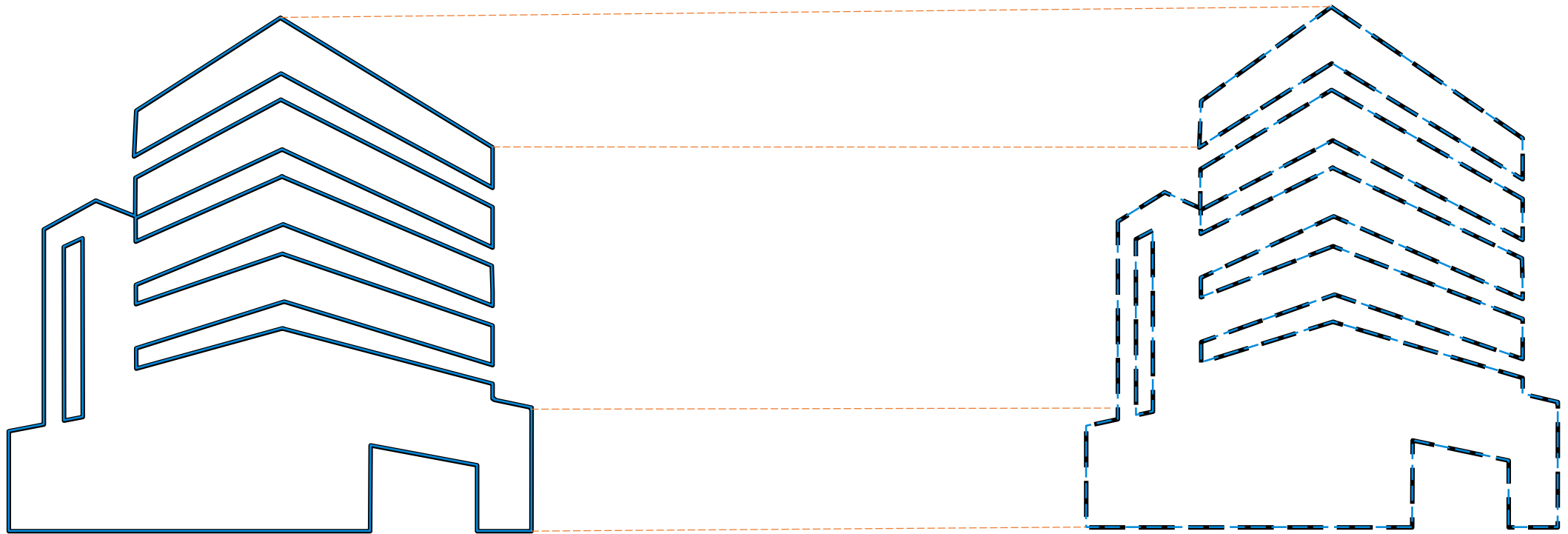
Digital Twin:

- Bridges the physical and virtual
- Spans entire asset lifecycle
- Is updated continuously
- Is a way to visualize assets, check status, perform analysis and generate insights



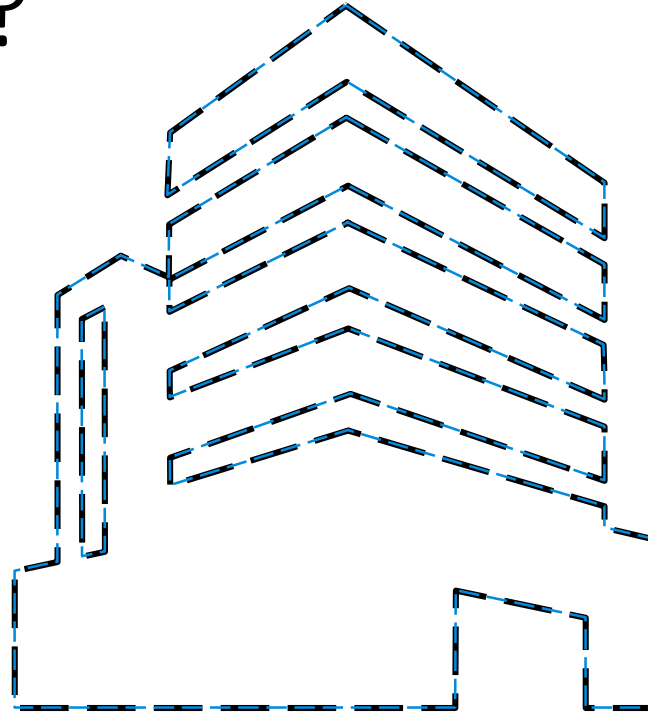


Starts with 4D CONTEXT

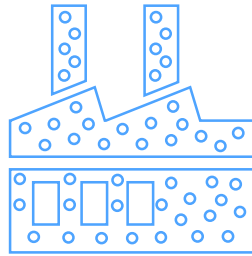


Connecting Reality and Virtuality.. **with 4D Context**

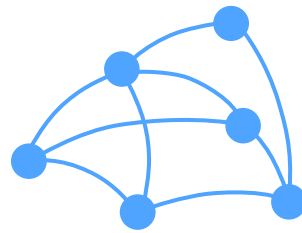
What is 4D Context?



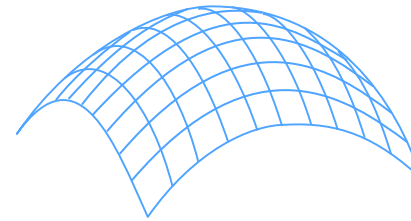
Photos



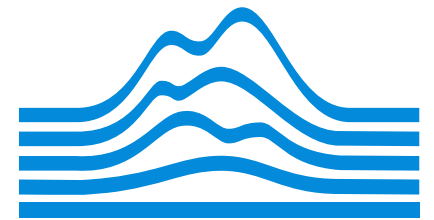
Point Cloud



Reality Mesh

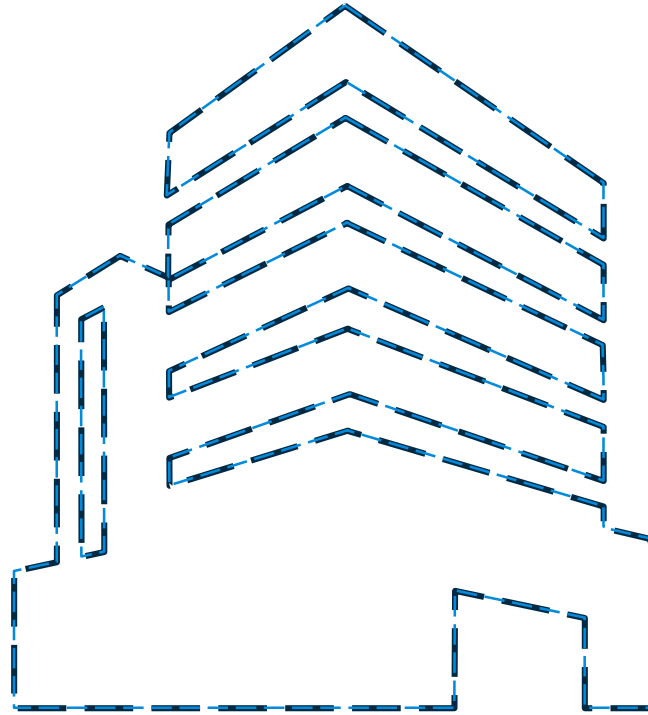


Terrain



2D & 3D Maps

Reality Modeling and OpenCities Missions



4D Context



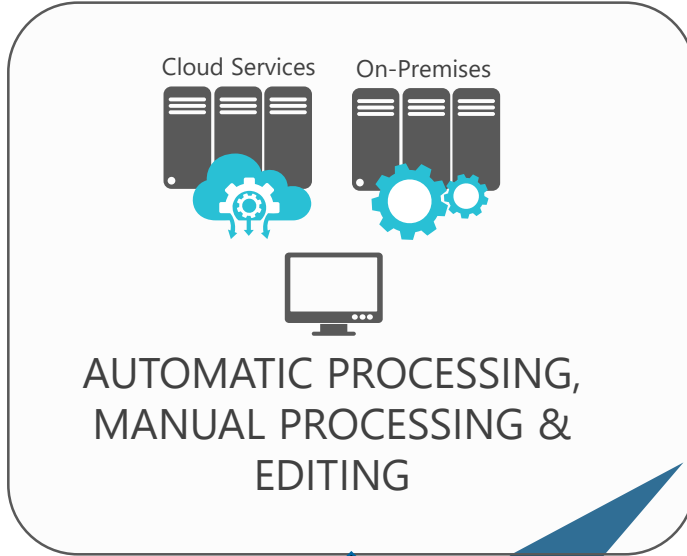
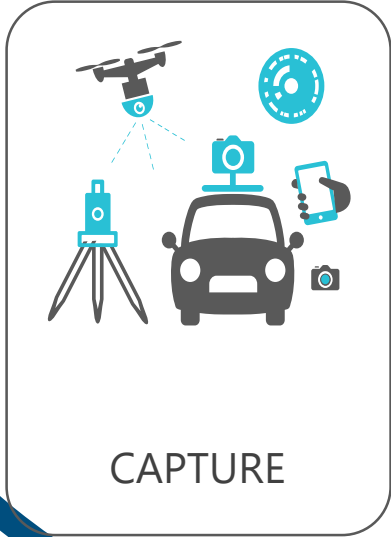
Reality Modeling and Mapping Experts



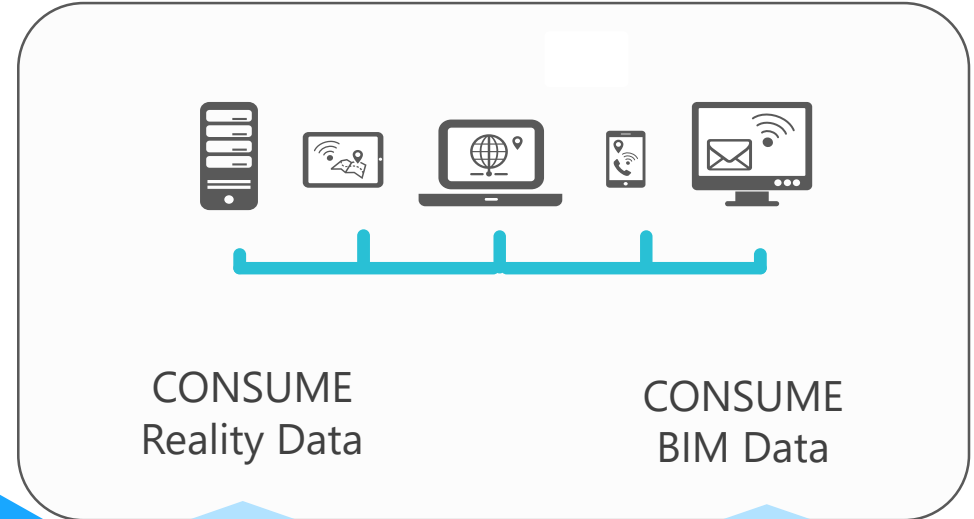
Digital Twin Users



Reality Modeling, Survey and Mapping Experts



Digital Twin Users

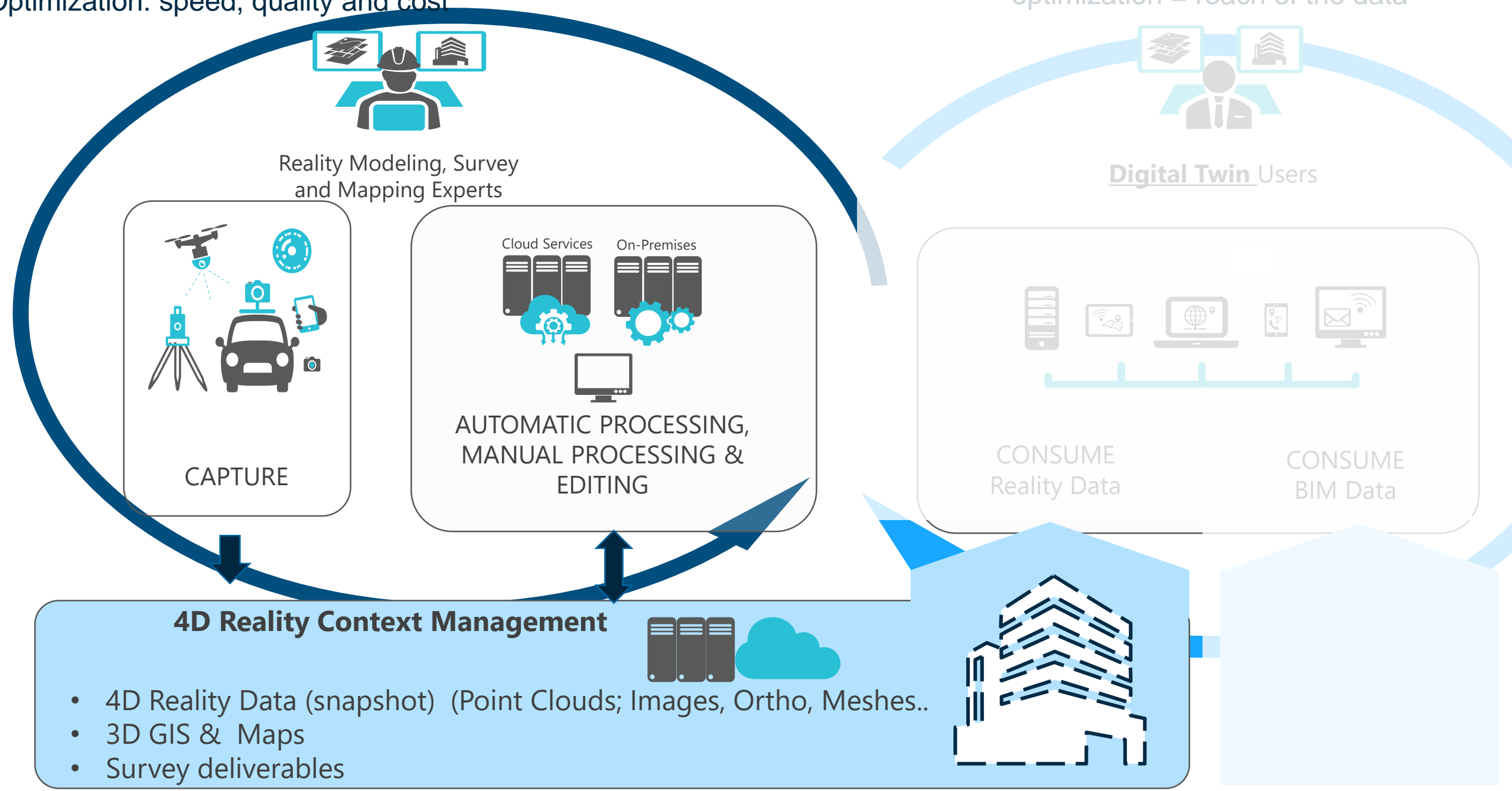


4D Reality Context Management



- 4D Reality Data (snapshot) (Point Clouds; Images, Ortho, Meshes..)
- 3D GIS & Maps
- Survey deliverables





Reality Modeling, Survey and Mapping Experts

Digital Twin Users

CAPTURE

AUTOMATIC PROCESSING, MANUAL PROCESSING & EDITING

CONSUME Reality Data

CONSUME BIM Data

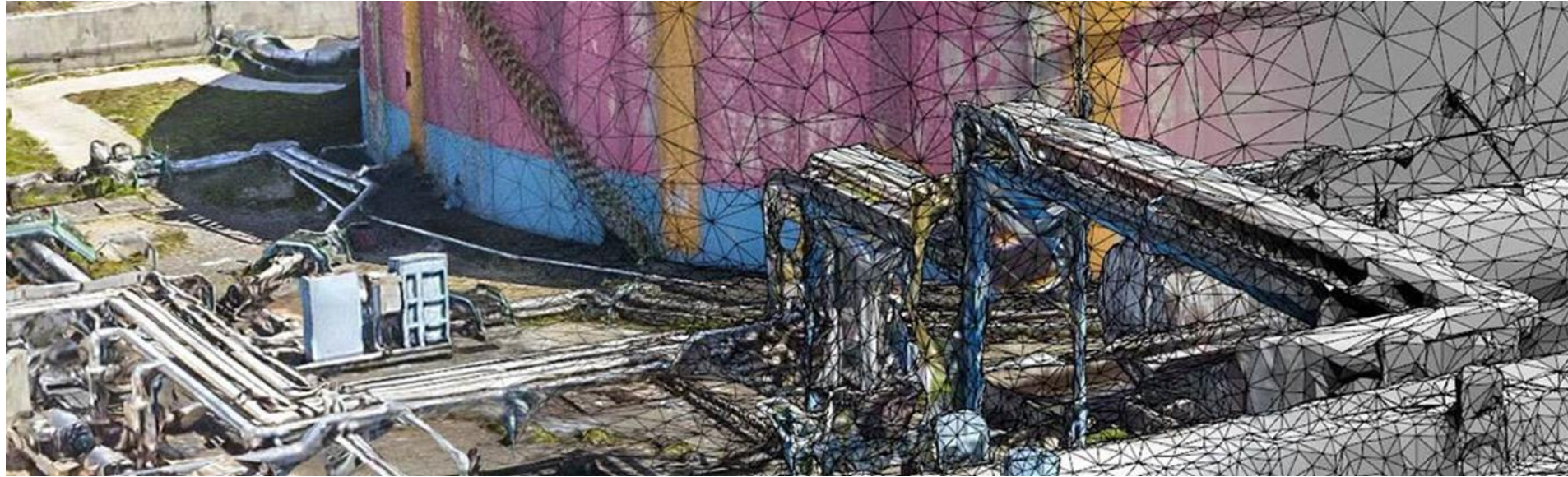
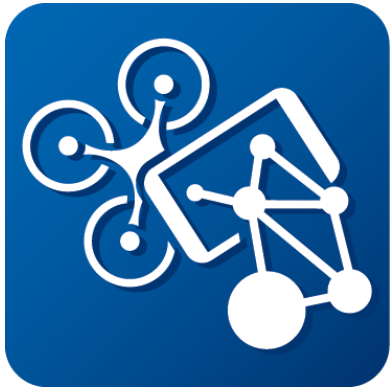
4D Reality Context Management



- 4D Reality Data (snapshot) (Point Clouds; Images, Ortho, Meshes..)
- 3D GIS & Maps
- Survey deliverables



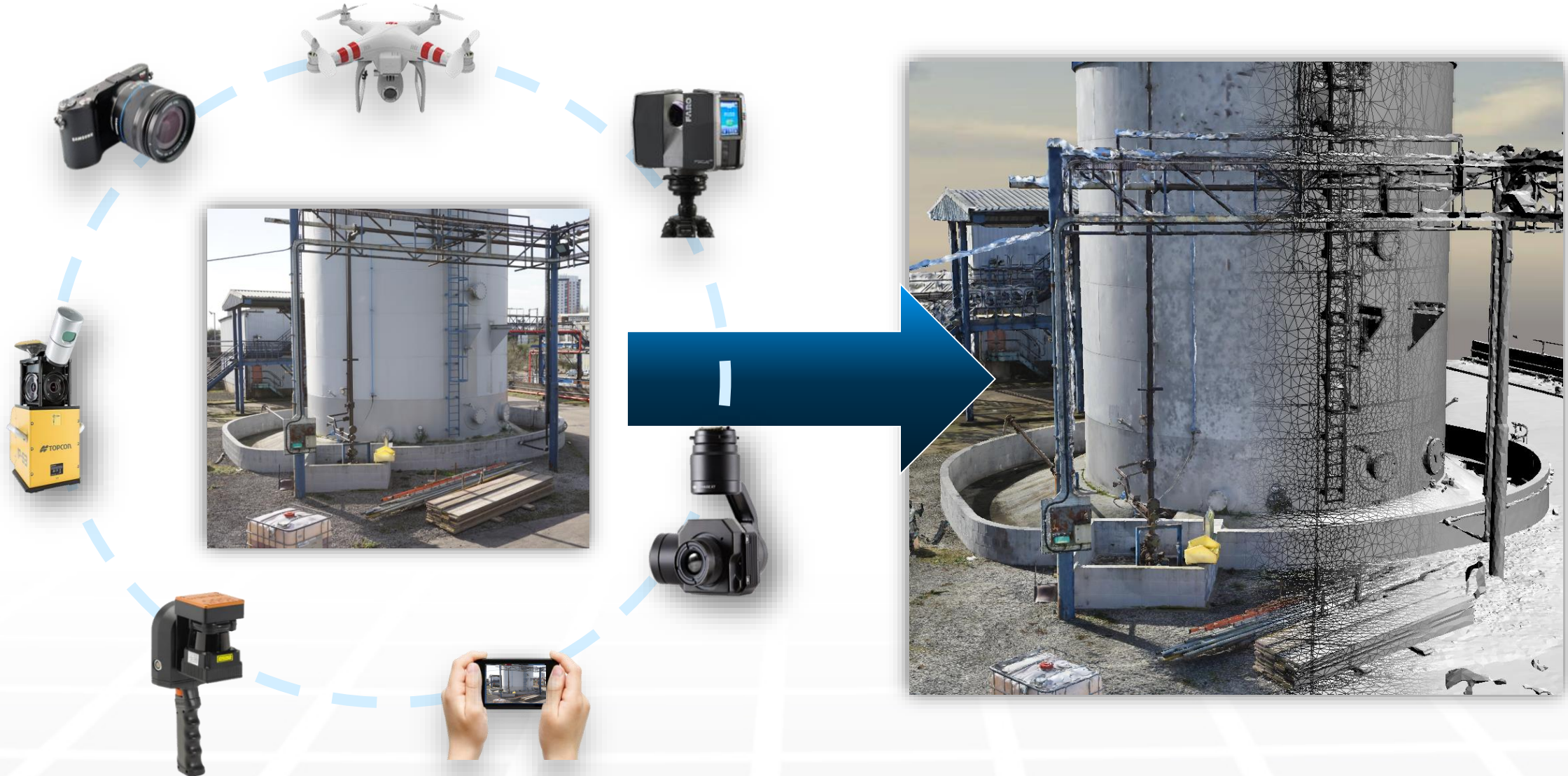
Supporting 4D Reality Meshes, Creation & Update with **ContextCapture** & **PW ContextShare**



- ContextCapture (Desktop or Center) & ContextCapture Cloud Service turn photos & point clouds into Meshes
- PW ContextShare enables secured storage of Reality Data & collaboration between RM specialists.



ContextCapture and ContextCapture Cloud



Acquire pictures or laser scans



Generate high-fidelity 3D reality meshes



ContextCapture Master

New project

Choose project name and location.

Project name

A sub-directory 'Inspection' will be created.

Project location

Description

ProjectWise project

Create an empty block

Review reality mesh in the Reality Data Web Viewer



[ContextCapture] Processing of "Inspection - cloud - Version 1" has completed! - Message (HTML)

File Message Help ProjectWise Tell me what you want to do

Ignore Delete Archive Reply Reply All Forward IM More

Move to: ? To Manager Team Email Done Reply & Delete Create New

Rules OneNote


Move Assign Policy Mark Unread Categorize Follow Up

Translate Find Related Select


Read Aloud Zoom Report Phish to SOC Insights


Delete Respond Quick Steps Move Tags Editing Speech Zoom Bentley SOC

Fri 04/10/2019 11:20

 ContextCapture cloud processing service <no-reply@bentley.com>

[ContextCapture] Processing of "Inspection - cloud - Version 1" has completed!

To:  Jerard Marsh

 If there are problems with how this message is displayed, click here to view it in a web browser.
Click here to download pictures. To help protect your privacy, Outlook prevented automatic download of some pictures in this message.



ContextCapture cloud processing service

Processing of "Inspection - cloud - Version 1" has **completed**.

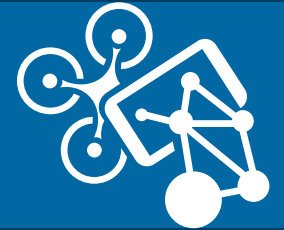
[Open model in Reality Data Web Viewer](#)

[Access the ProjectWise Project.](#)

Processing Report

Inputs: Photos: 310 (6.1882 gigapixels)
Settings: Quality: Extra Speed Factor: Maximum

ContextCapture Insights



Detecting 3D objects from a georeferenced collection of images



Searching a collection of images for given objects





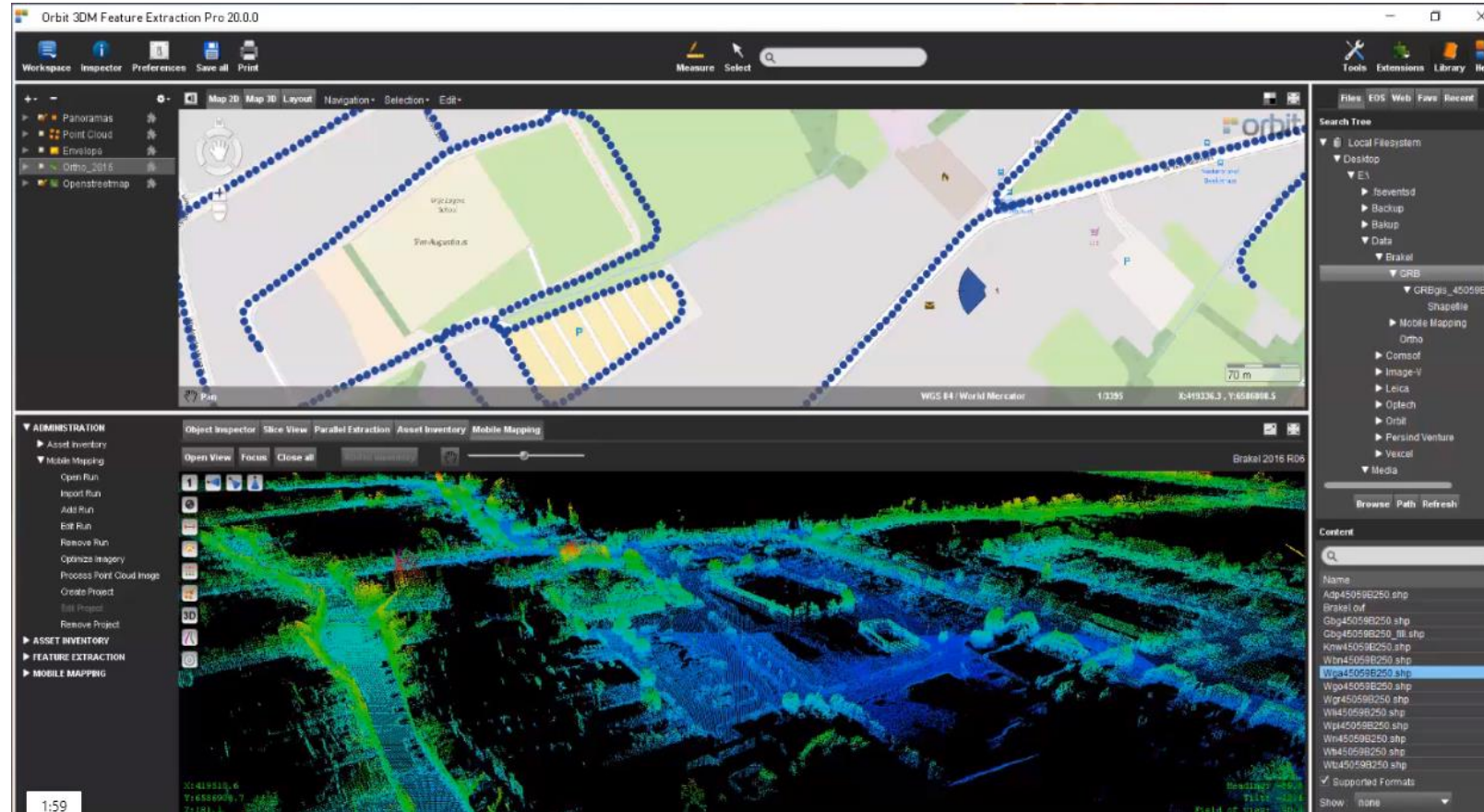
Supporting 4D Mobile Mapping Data Creation & Update with 3DM Context Manager



- 3DM Context Manager enables effective import, structuring, consolidating, cataloging of Mobile Mapping Data



Supporting 4D Maps and Features Creation & Update with 3DM Feature Extraction & Plugins



- 3DM Feature Extraction enables effective feature extraction with Mobile mapping data
- 3DM Plugins enable direct consumption of Mobile Mapping Data in end users preferred environment and effective on-demand asset inventory updates

ORBIT 3DM CONTENT MANAGER

VERSION 20

Import - Explore - Verify - Adjust - Deliver

Manage 3D Mapping data after Capture



All vendors & systems supported

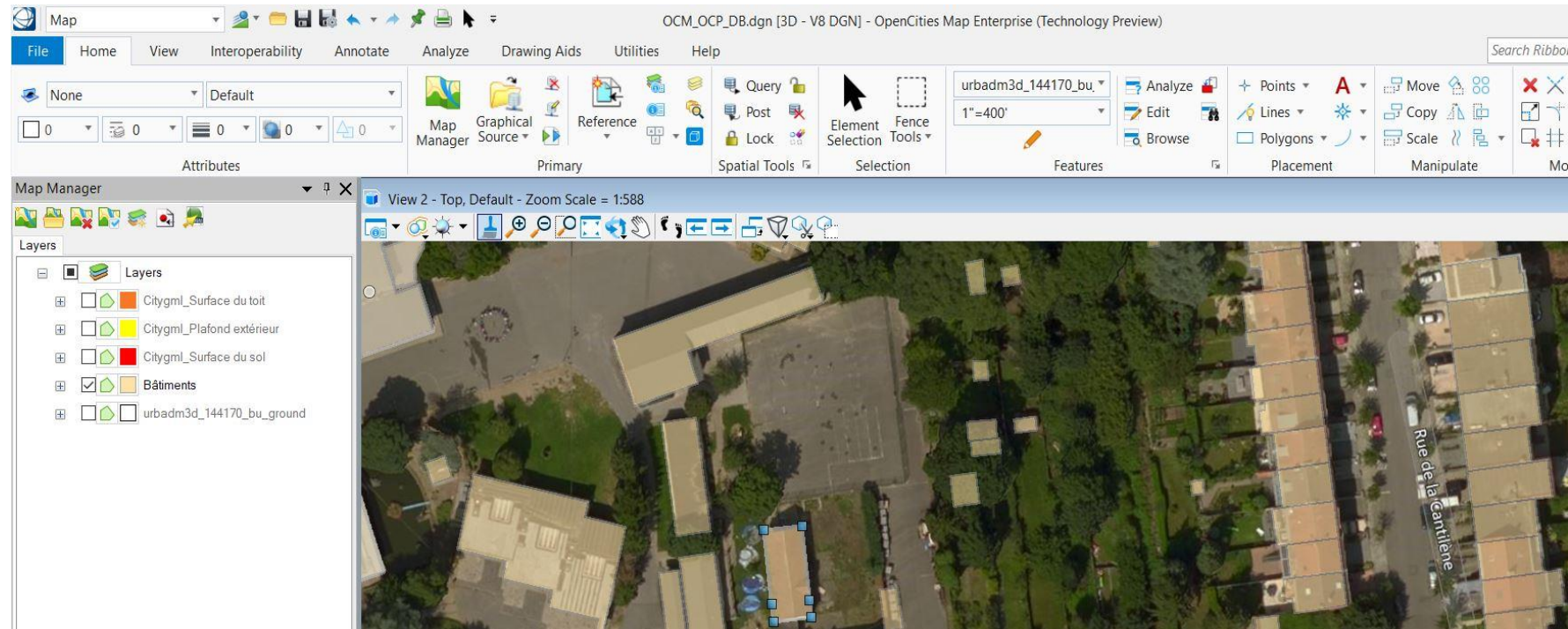
LIDAR USA



Supporting 4D Maps and Features Creation & Update with **OpenCities** Map



OpenCities Map



- Federate Multiple data sources from Reality Data, Engineering (IFC, DWG, DXF...) & GIS (ESRI, SHP, GML..)
- Interactive 3D GIS Feature Editing & Creation powered MicroStation & GIS standard enforcements
- Populate directly Spatial Databases, Run spatial analysis and create deliverables (Maps & GIS files)

File Home View Interoperability Annotate Analyze Drawing Aids Utilities Help

Attributes: None, Default

Map Manager: Map Manager, Graphical Source, Reference, Query, Post, Lock, Element Selection, Fence Tools

Features: urbadm3d_145170_bu, 1"=400'

Placement: Points, Lines, Polygons

Manipulate: Move, Copy, Scale

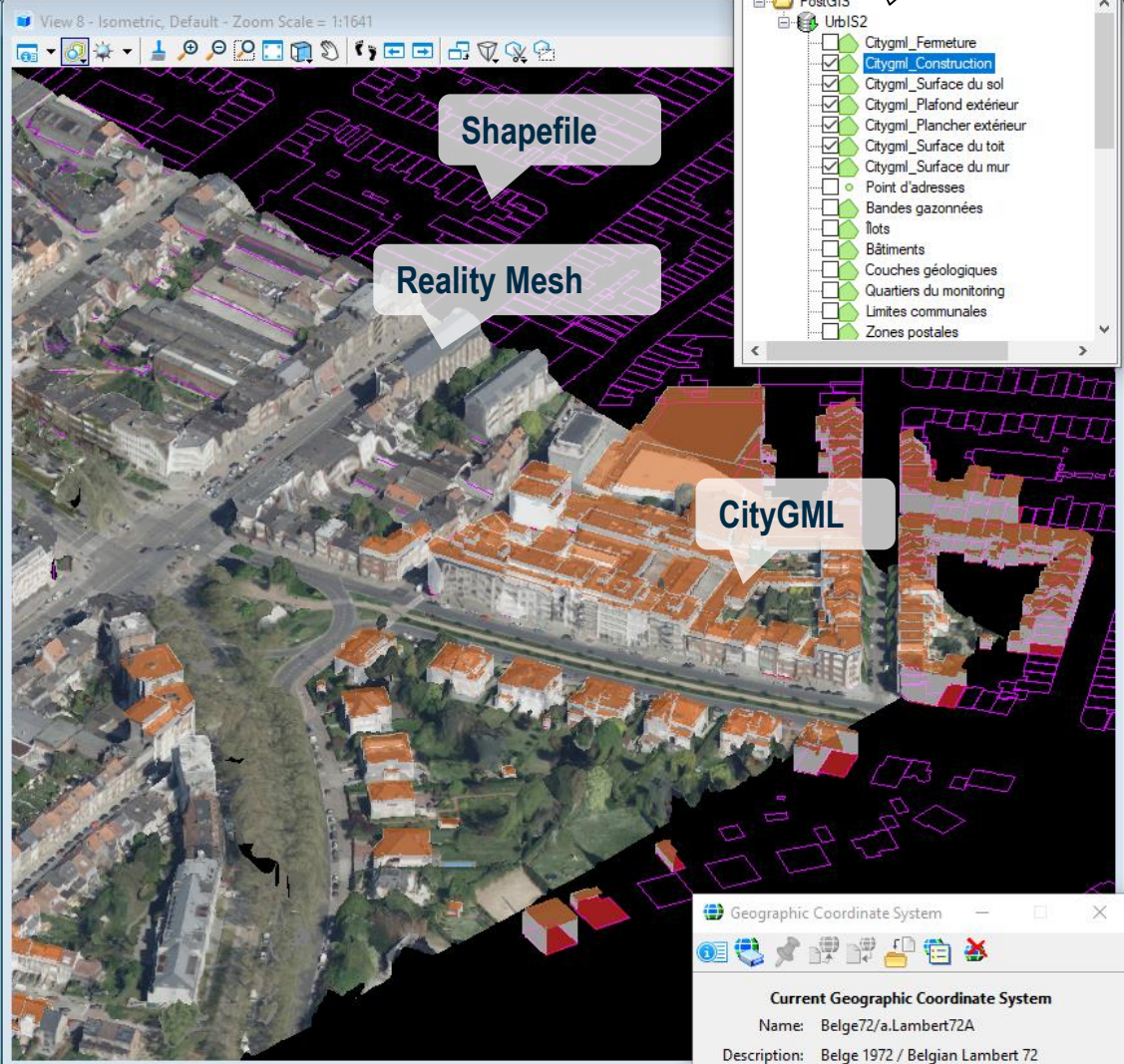
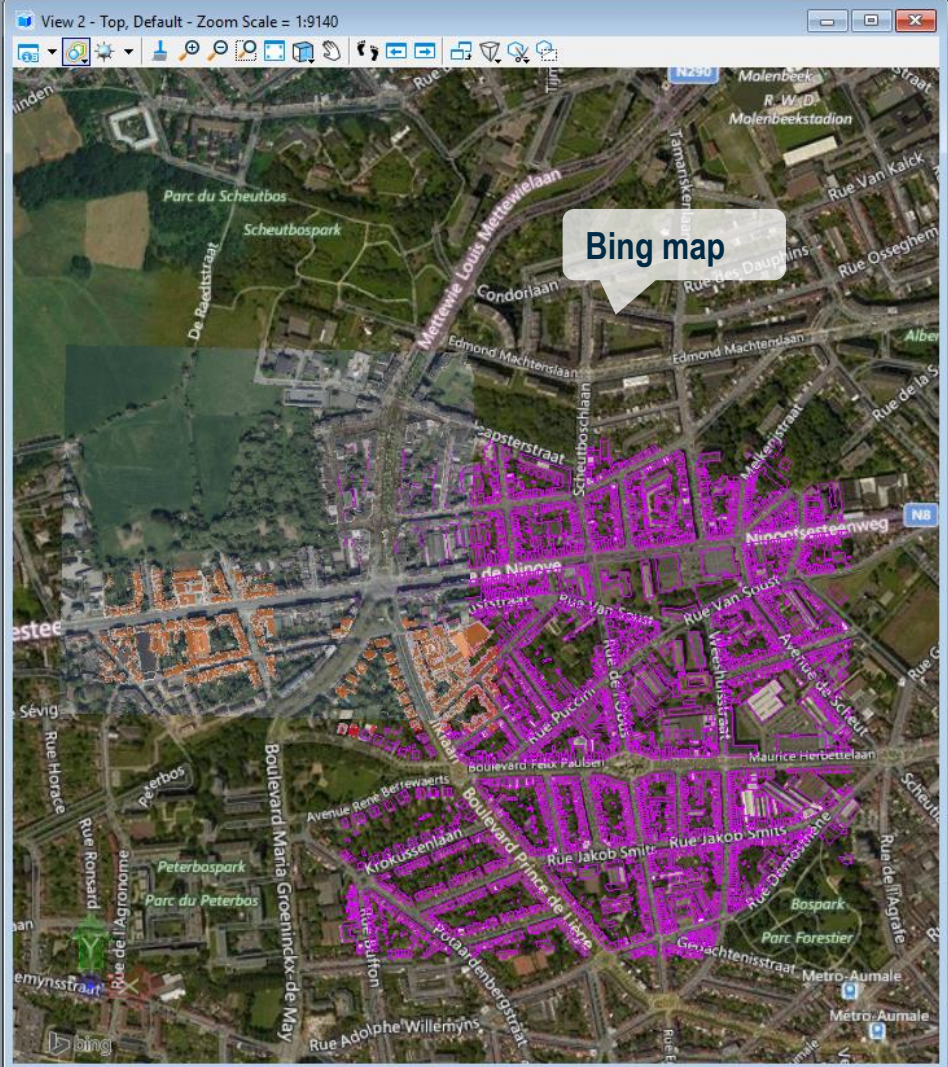
Modify: Delete, Erase, Trim, Extend, Break

Groups: Query Features, Spatial Extent, Apply Where Clases

Map Manager

Layers

- urbadm3d_144170_bu_ground
- Other Elements
- Zones d'intérêt
- Toponymes
- Text
- Shape
- Point
- Line
- Tunnels (chemin de fer/metro)
- Trottoirs
- Voie
- Parterres/bandes gazonnées/bosq
- Faces de rues (point)
- Limites des faces de rue
- Faces de rues
- Quartiers statistiques
- Axes de rues
- Point d'adresse
- Limite de la Région
- Zones de police
- Zones postales
- Limites communales



Query Features

Spatial Extent: PostGIS

Apply Where Clases

- PostGIS
 - UrbIS2
 - Citygml_Femature
 - Citygml_Construction
 - Citygml_Surface du sol
 - Citygml_Plafond extérieur
 - Citygml_Plancher extérieur
 - Citygml_Surface du toit
 - Citygml_Surface du mur
 - Point d'adresses
 - Bandes gazonnées
 - Ilots
 - Bâtiments
 - Couches géologiques
 - Quartiers du monitoring
 - Limites communales
 - Zones postales

Geographic Coordinate System

Current Geographic Coordinate System

Name: Belge72/a.Lambert72A

Description: Belge 1972 / Belgian Lambert 72

Source: EPSG:31370

Default Views

1 2 3 4 5 6 7 8 X 144957.1770 Y 171525.2996 Z 3.3523

Query Features > Accept/Reject Features

Query Complete (2587 features in 7.044 seconds).

Default

CityGML editing

Attributes Primary Selection 3D Smart Editing Placement Manipulate Modify Groups

Map Manager Oracle Spatial Reference Element Selection Fence Tools Create XFM Solid Drop XFM Solid Slab Extrude Move Copy Rotate Modify Solid Imprint Boolean Tools

Map Manager

Layers

- Layers
- ? Other Elements
- Buildings

View 1, Default - Zoom Scale = 1:1047

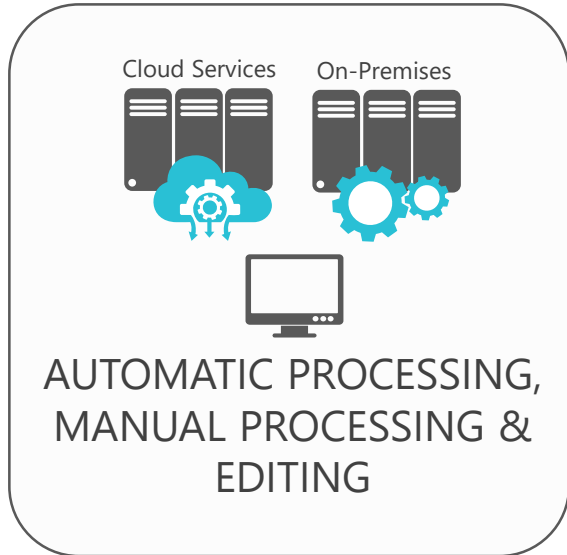
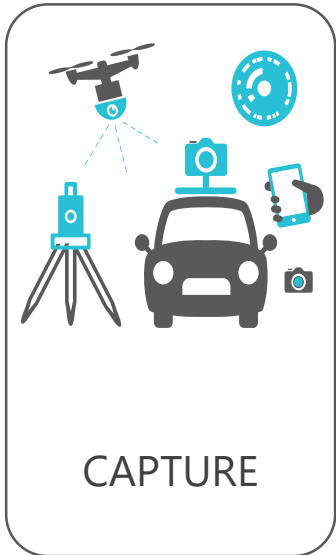
bing

Element Selection

Navigation and selection tools including pan, zoom, and selection icons.



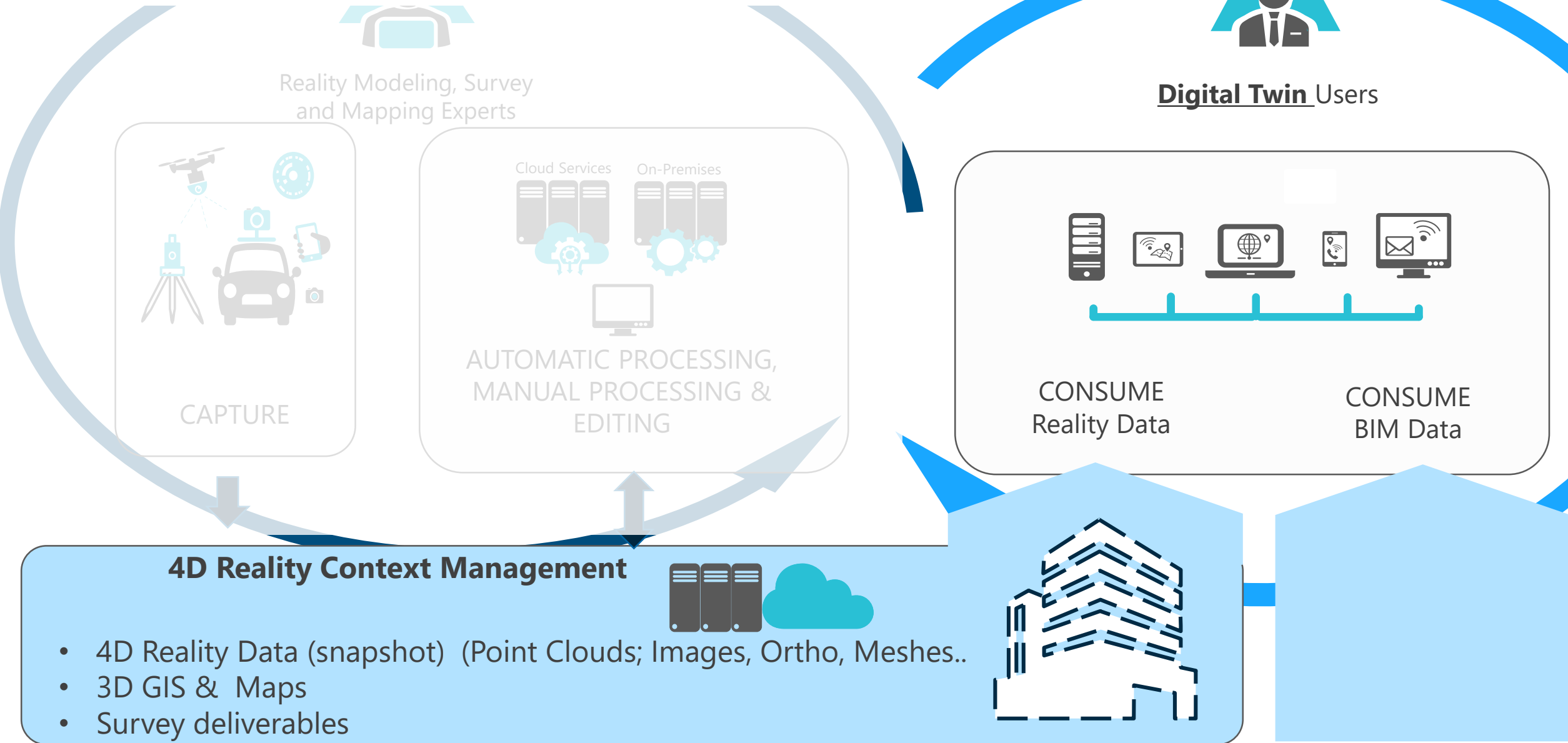
Reality Modeling, Survey
and Mapping Experts



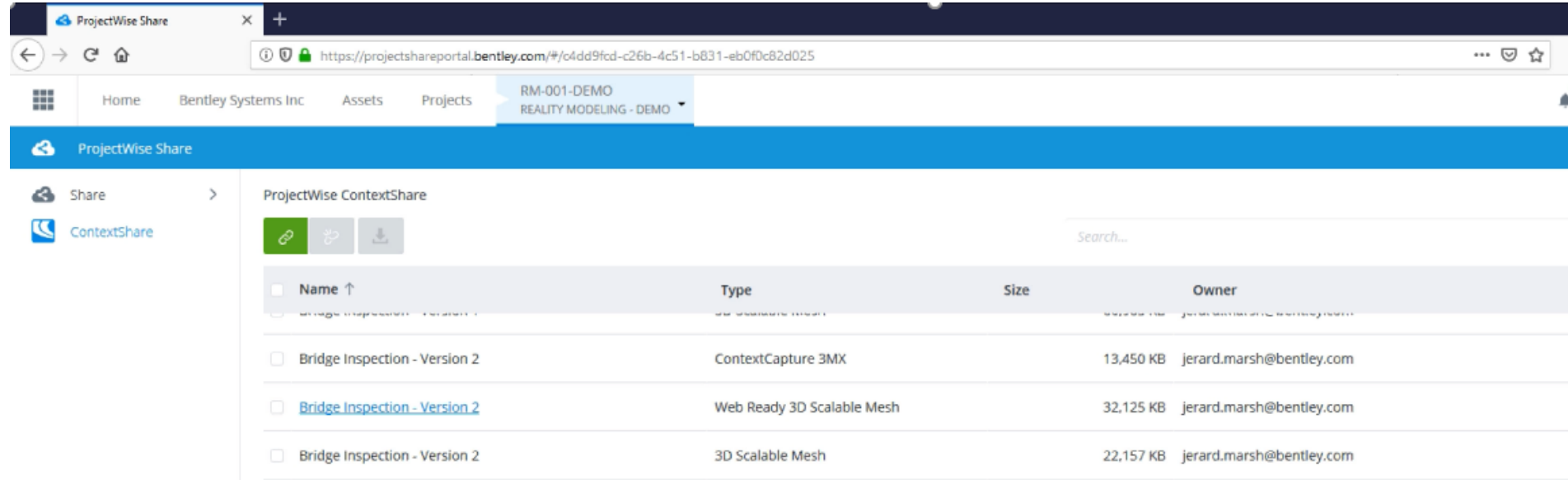
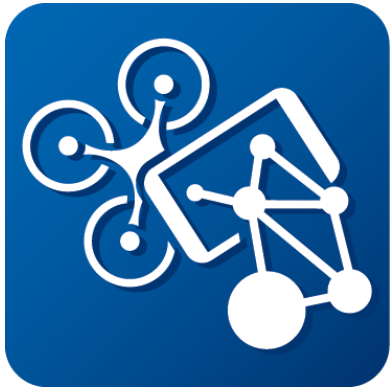
Playbook

<i>Product</i>	<i>Solved Problem</i>
ContextCapture & Insights	Turns Photos &/or Point Clouds into <u>Reality Meshes</u> (<i>on-premise</i>)
ContextCapture CloudProcessing Service (3CS)	Turns Photos &/or Point Clouds into <u>Reality Meshes</u> (<i>Cloud</i>)
ContextCapture Mobile	Takes pictures on the field and submit to 3CS to create <u>Reality Meshes</u>
PW ContextShare	Store <u>Reality Meshes</u> , Point Cloud and Images on the cloud, manage user access and streams reality meshes
3DM Content Manager	Import, Clean, Catalog, Edit Point Clouds and Images & Upload to the cloud
3DM Feature Extraction	Extract GIS data (points, lines, Polygons) from <u>Point Cloud and Images</u> into Spatial DB
OpenCities Map	Create & update <u>GIS data & Maps</u>
Pointools	Edit and Colorize <u>Point Clouds</u>

Enabling 4D Context Consumption



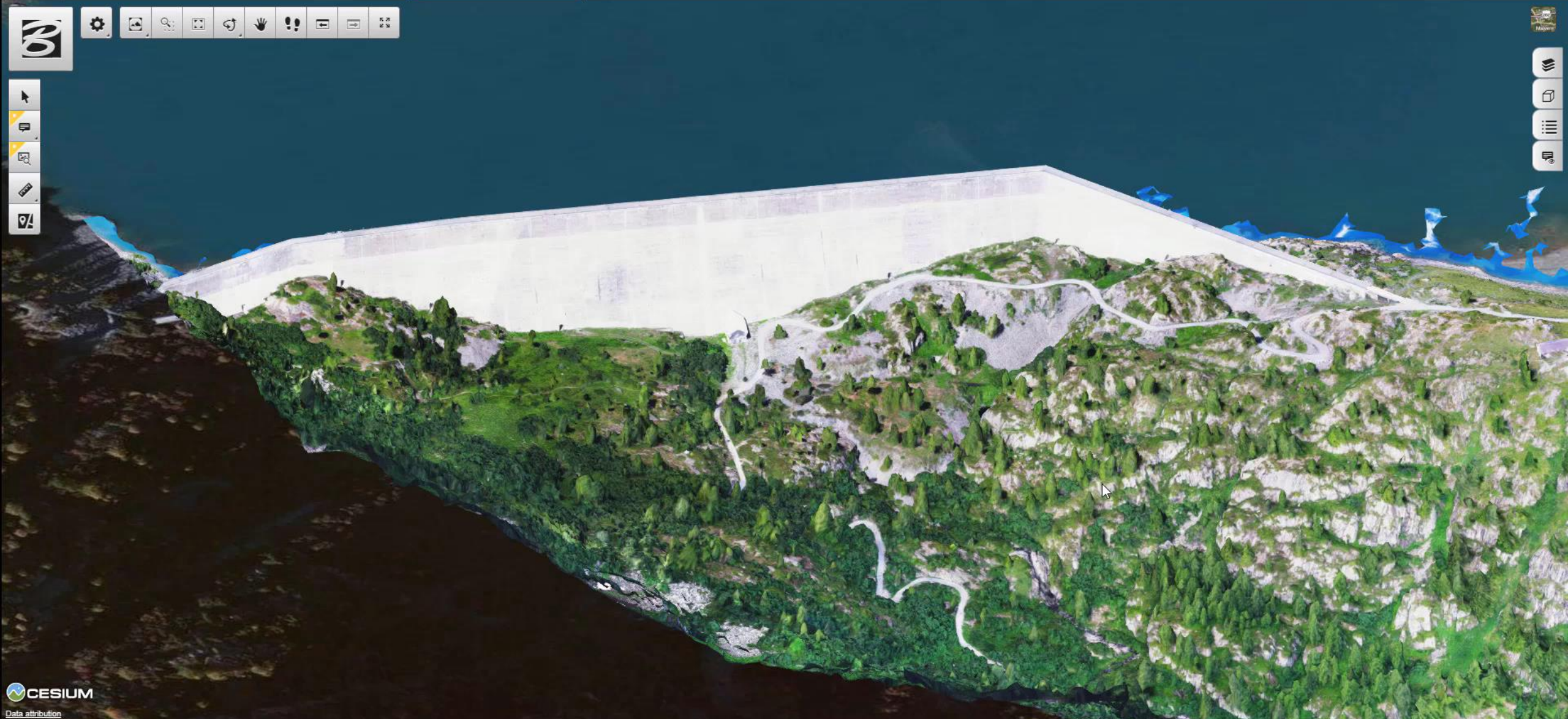
Enabling 4D Reality Meshes Consumption: Management with PW ContextShare



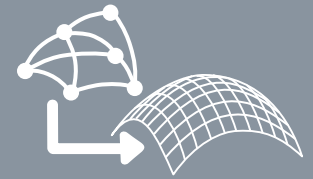
- Enables secured management of Reality Data & collaboration between iTwin Users.
- Reality Meshes can be reviewed, measured & annotated on-line
- Reality Meshes can be streamed to MicroStation based applications.

Add team members for online review

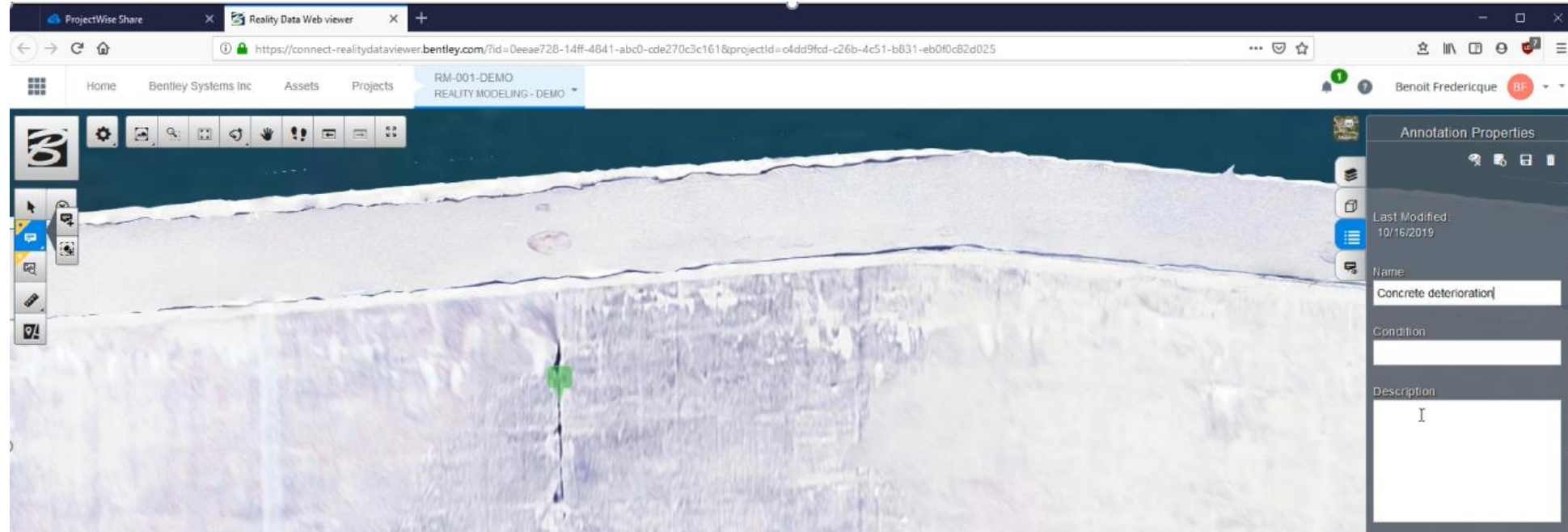




Inspect and annotate the reality mesh and data



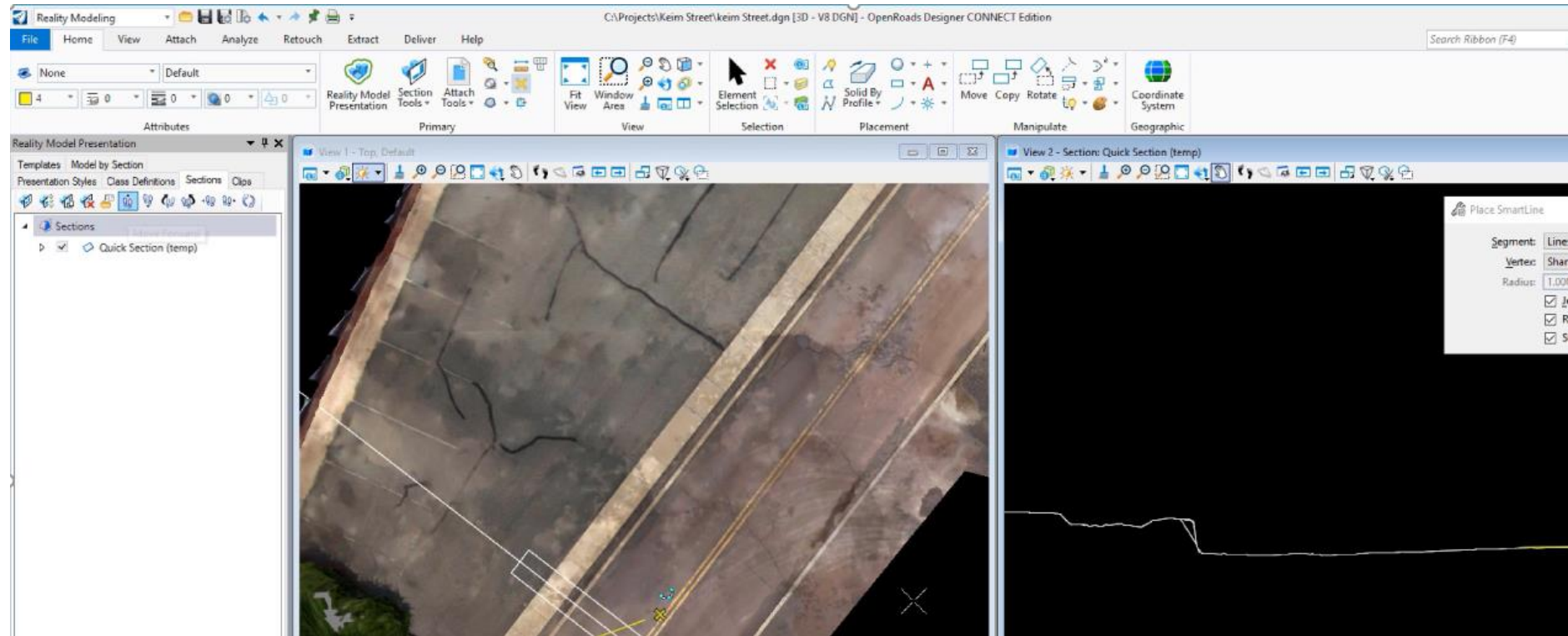
Enabling 4D Reality Meshes Consumption: Web review with PW ContextShare



- Reality Meshes can be reviewed, measured & annotated on-line

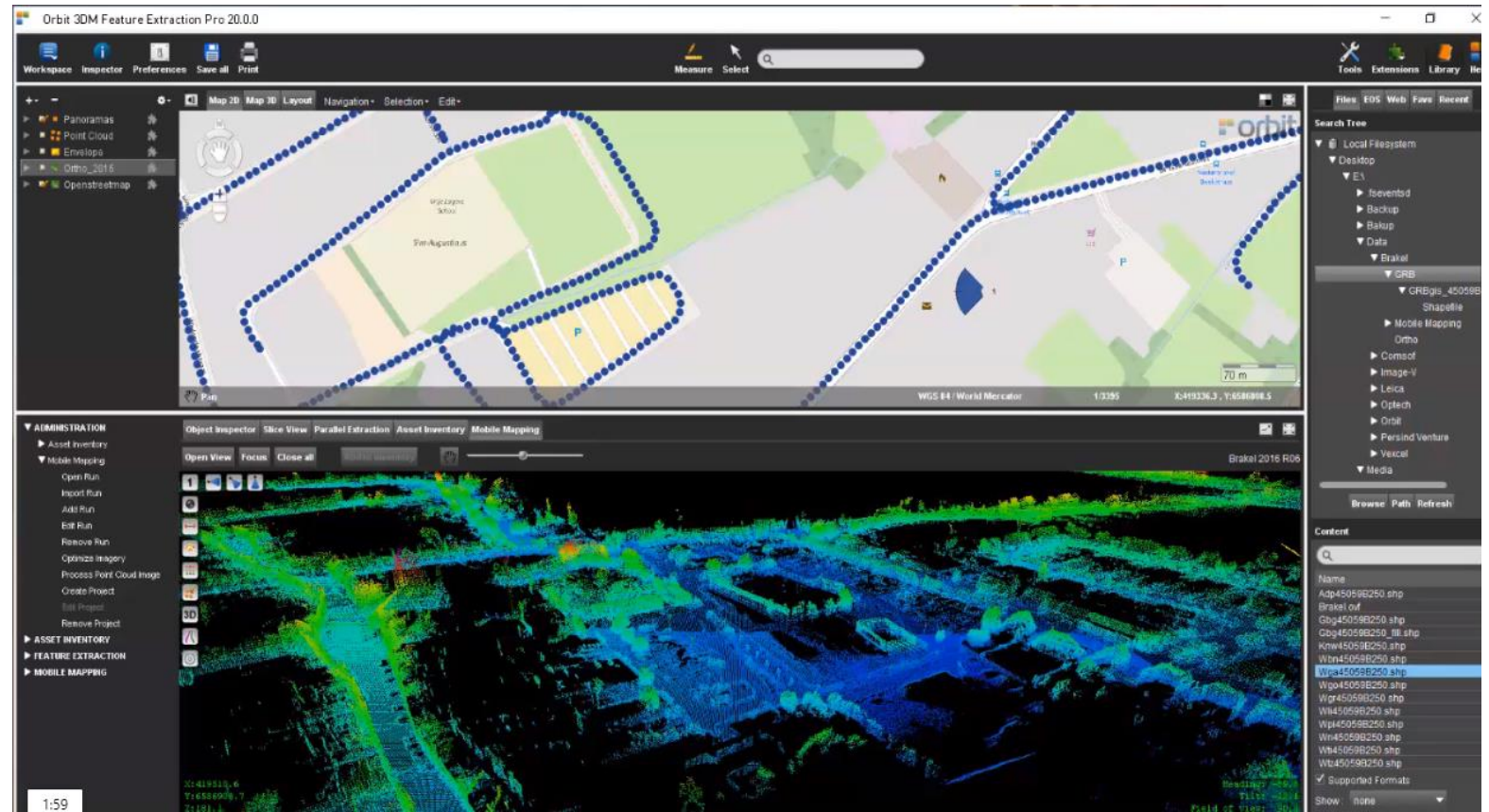
**Support inspection workflows
with Reality Data Web Viewer**

Enabling 4D Reality Meshes Consumption: effective handling in Engineering environment



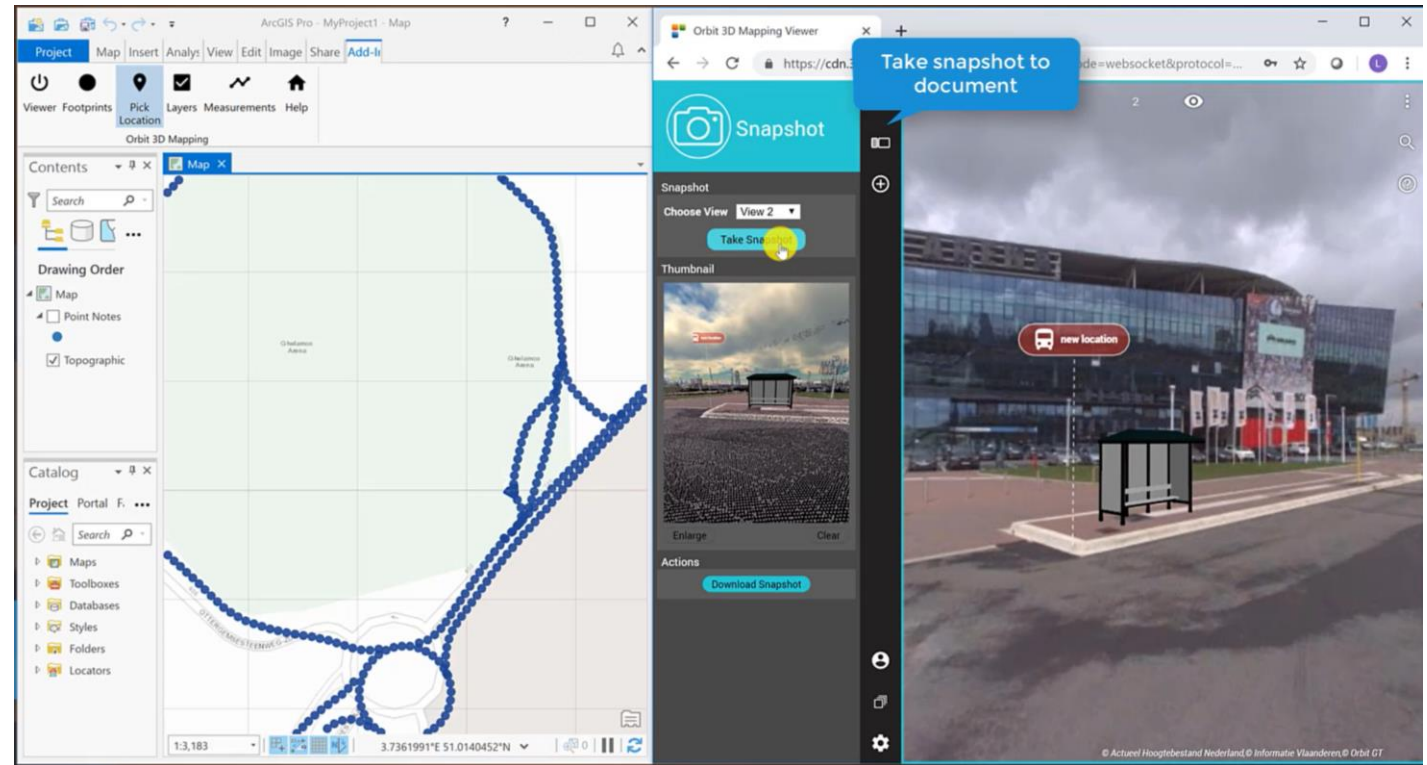
- Display large Reality Meshes directly streamed from PW CS
- Native Element & good citizen
- Advanced dedicated capabilities (Terrain extraction, x-sections...)

Enabling 4D Mobile Mapping Data Consumption: 3DM Feature Extraction Basic



- Simple tools in Desktop product enabling 3D measurements

Enabling 4D Mobile Mapping Data Consumption: 3DM Cloud & Publisher

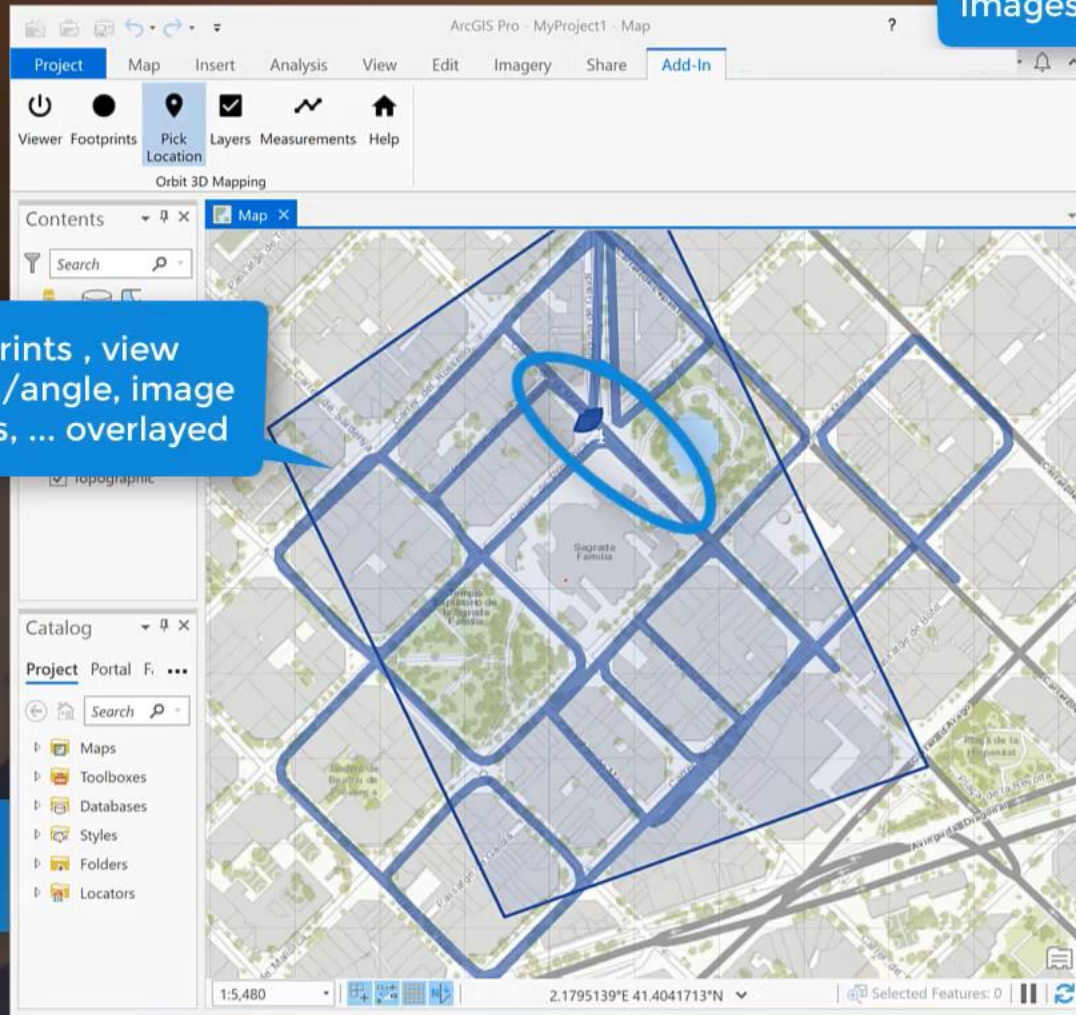


- Plug-ins in numerous end users environment: ESRI, QGIS, Autocad & MicroStation (coming)

Orbit 3D Mapping Plugin for ArcGIS Pro

Navigate through streetview, nadir, oblique images, LiDAR, DSM point clouds, meshes, etc

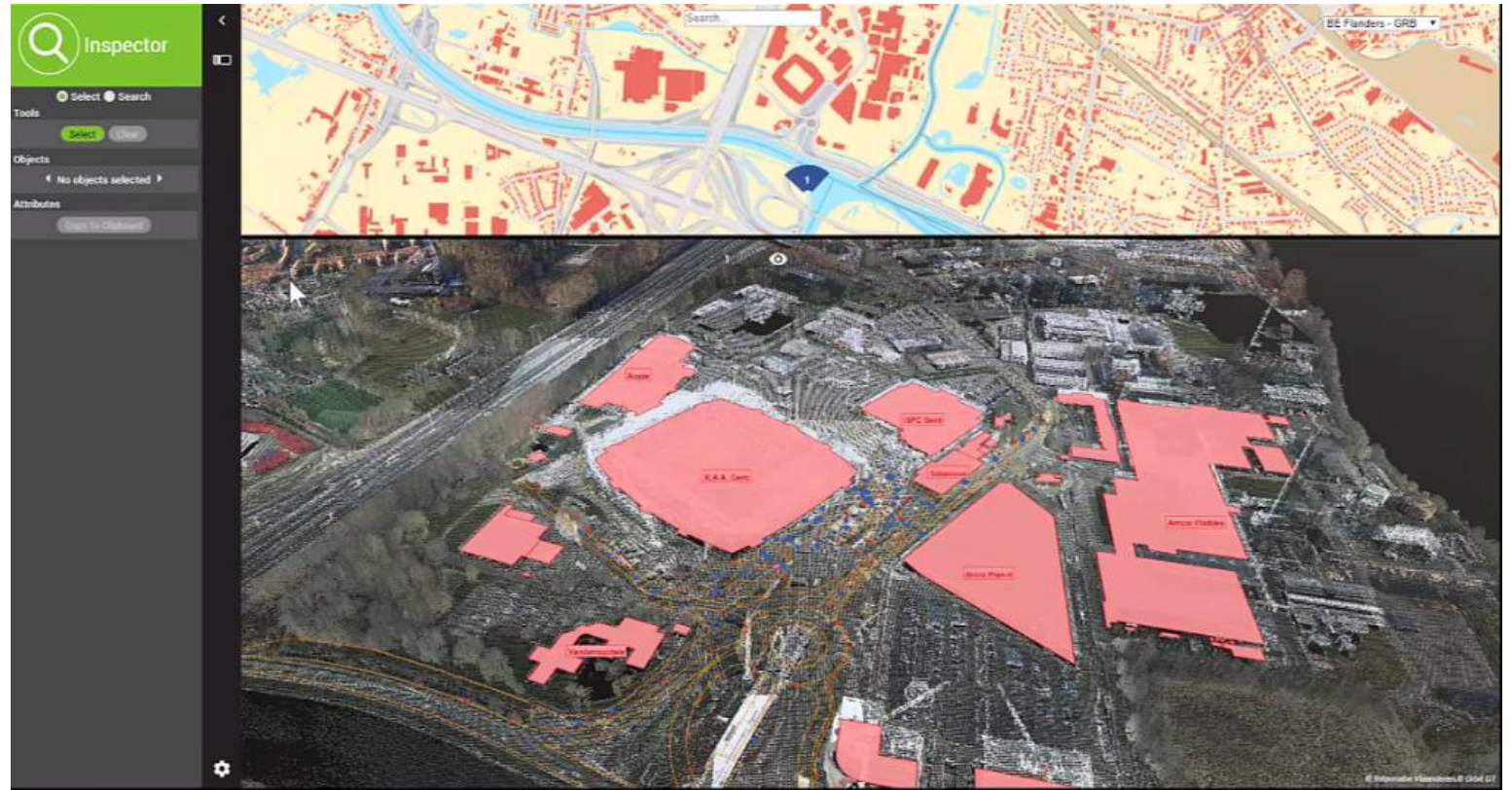
footprints, view direction/angle, image positions, ... overlaid



Navigate



Enabling 4D Mobile Mapping Data Consumption: 3DM Cloud & Publisher

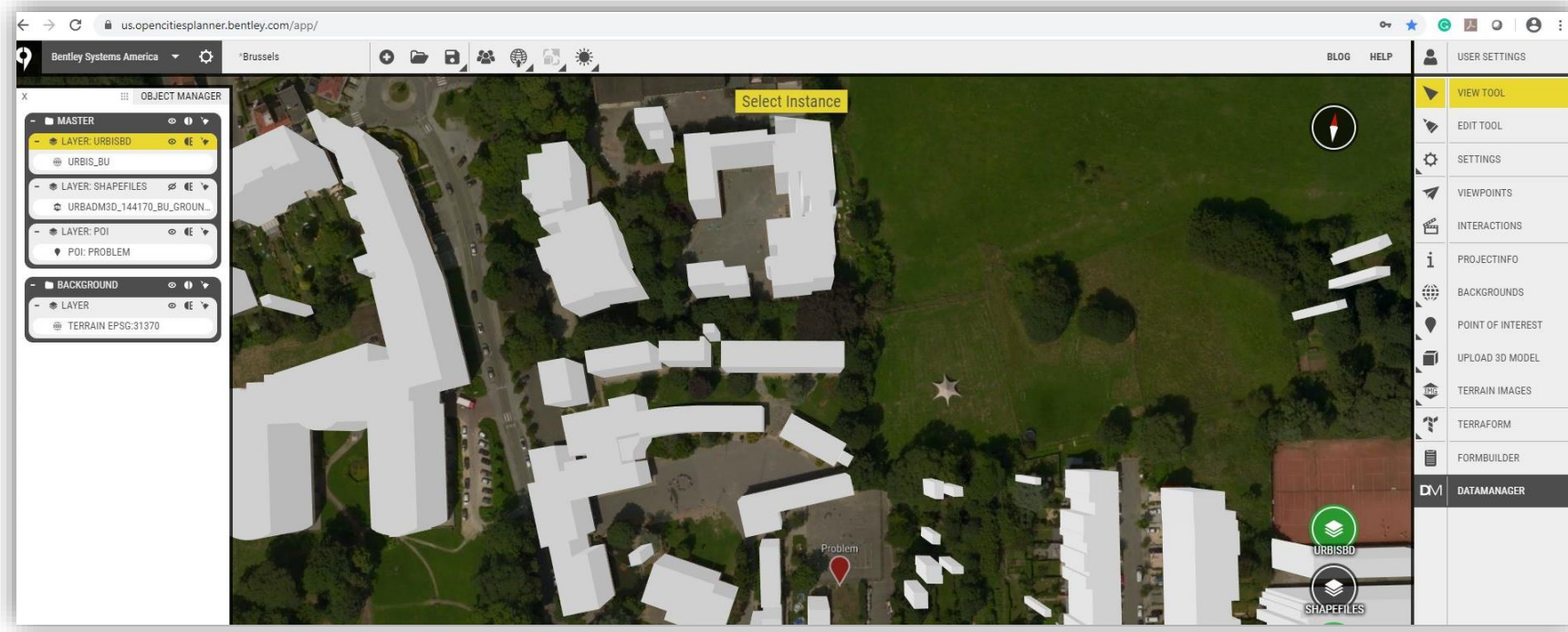


- Customizable web application enable the visualization of Mobile Mapping Data (point cloud & images) with GIS layers

Enabling stakeholders engagement: 4D Context & Projects with OpenCities Planner



OpenCities Planner



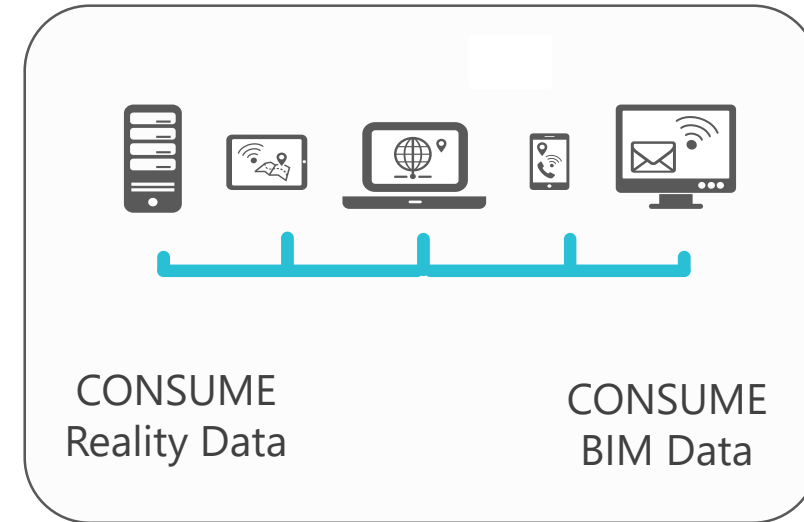
- 4D Context (Reality Meshes , Terrain, 3D City Model, Ortho , GIS datas)
- Design (Urban planning & Engineering)
- Simple UX & feedback gathering

Playbook

Product	Solved Problem
PW ContextShare	Store Reality Meshes , Point Cloud and Images on the cloud, manage user access and streams reality meshes. Lightweight review capabilities of Reality Meshes
Bentley Design Product (Microstation based)	Visualize Reality Meshes streamed from the cloud and local images and point clouds
3DM Content Manager	Import/Upload, Catalog , Point Clouds and Images to the cloud
3DM Feature Extraction Basic	Enable Point Clouds and Images review and simple feature extraction
3DM Publisher	Manage user access, Stores and streams Point Cloud and Images (on-premise)
3DM Cloud	Manage user access, Stores and streams Point Cloud and Images (Cloud)
3DM Plugins for ESRI, QGIS, Autocad and MicroStation	Enable consumption in side view of Point Cloud and Images in Users Environment of hosted data
OpenCities Planner	Large scale & in Context (i.e. with Terrains, Reality Meshes, Ortho , 3D GIS Data) Infrastructure project communication through web based visualization & collaboration



Digital Twin Users



Summary

- A unique comprehensive workflow to address *4D Context* Capture, Management and to enable consumption
- Which product do I need?
 - ContextCapture/Reality Modeling **if creating & delivering Reality Meshes**
 - Orbit 3DM if **delivering Point Cloud and Mobile Mapping**
 - OpenCities Planner for **Large Scale Infrastructure Project Communication and Collaboration**